

MaineHealth

MaineHealth Knowledge Connection

MaineHealth Performance Improvement

2020

Screening, Brief Intervention and Referral to Treatment (SBIRT)

Jennifer Dubail

Follow this and additional works at: <https://knowledgeconnection.mainehealth.org/cpi>

Problem/Impact Statement

Addiction treatment has been a high priority for MaineHealth over the last year with a focus on adults and maternal/fetal medicine. Substance use by adolescents is a rising issue in Maine and across the nation and SBIRT is now an American Academy of Pediatrics Health Initiative. "Substance use by adolescents impairs healthy growth and development, is associated with risky behaviors, and contributes to the development of many other health problems." According to SAMHSA, utilizing SBIRT can save \$43,000 in future healthcare costs for every \$10,000 used in early intervention. SBIRT programs showed a significant reduction of 27% in substance use for high-risk patients who received some form of intervention.

Scope

In Scope:

- AYA patients at pilot sites (ages 12 to 26)
- Pilot sites (S. Portland Peds, Portland Peds)
- All manner of substance use
- CRAFFT substance use screening tool

Out of Scope:

- Adults > 26 years of age at pilot sites
- Spread beyond pilot sites
- All other substance use screening tools other than tobacco screening

Goal/Objective

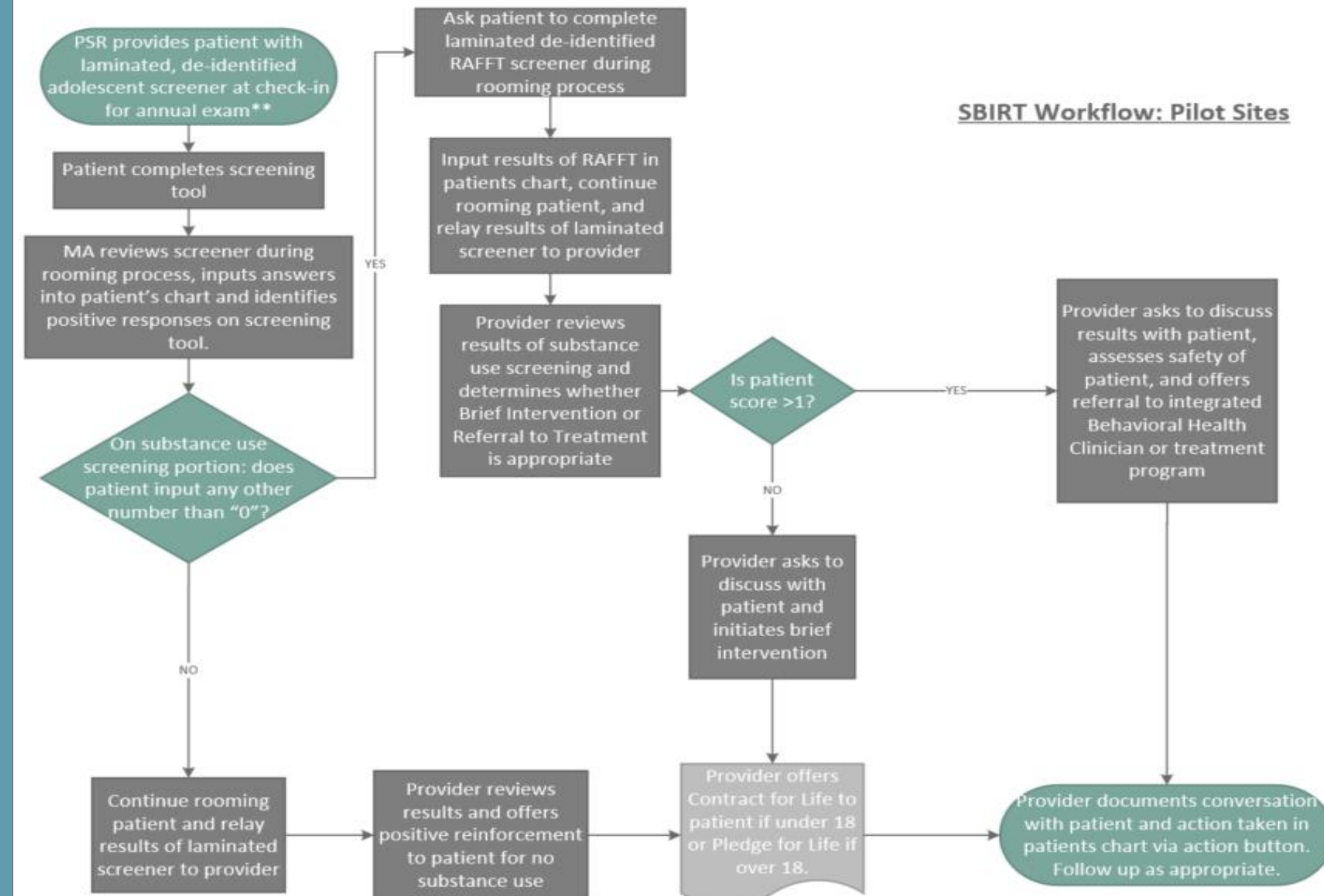
- By September 30th, 2020, develop workflows and training for Screening, Brief Intervention and Referral to Treatment (SBIRT) and launch a pilot focused on adolescent preventive health visits at two outpatient primary care clinics with 100% of providers at pilot sites trained in the new workflows.
- By September 30, 2020, 70% of eligible patients will be screened with the CRAFFT adolescent substance use screening tool.

Baseline Metrics/Current State

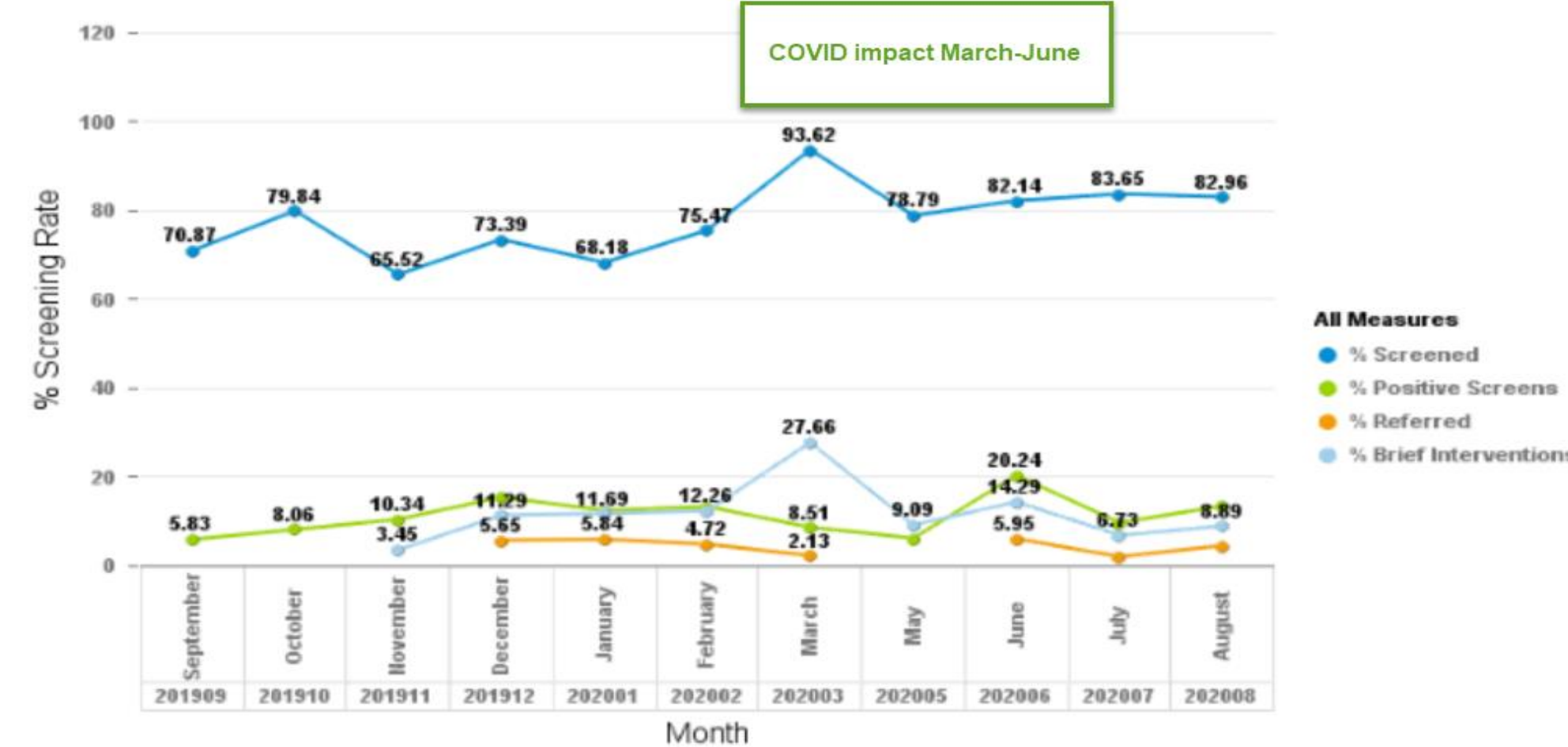
- CRAFFT Screening Rate Baseline; MMP Overall: 72.4%
- SBIRT Provider Education Baseline: 0%

Baseline SBIRT Rates	MMP Portland Peds	MMP S. Portland Peds
CRAFFT Screening Rate (11/2019)	65.5%	78.3%
Positive Screening Rate (11/2019)	10.3%	12.9%
Brief Intervention Rate (11/2019)	3.5%	3.2%
Referral to Treatment Rate (11/2019)	0.0%	0.8%

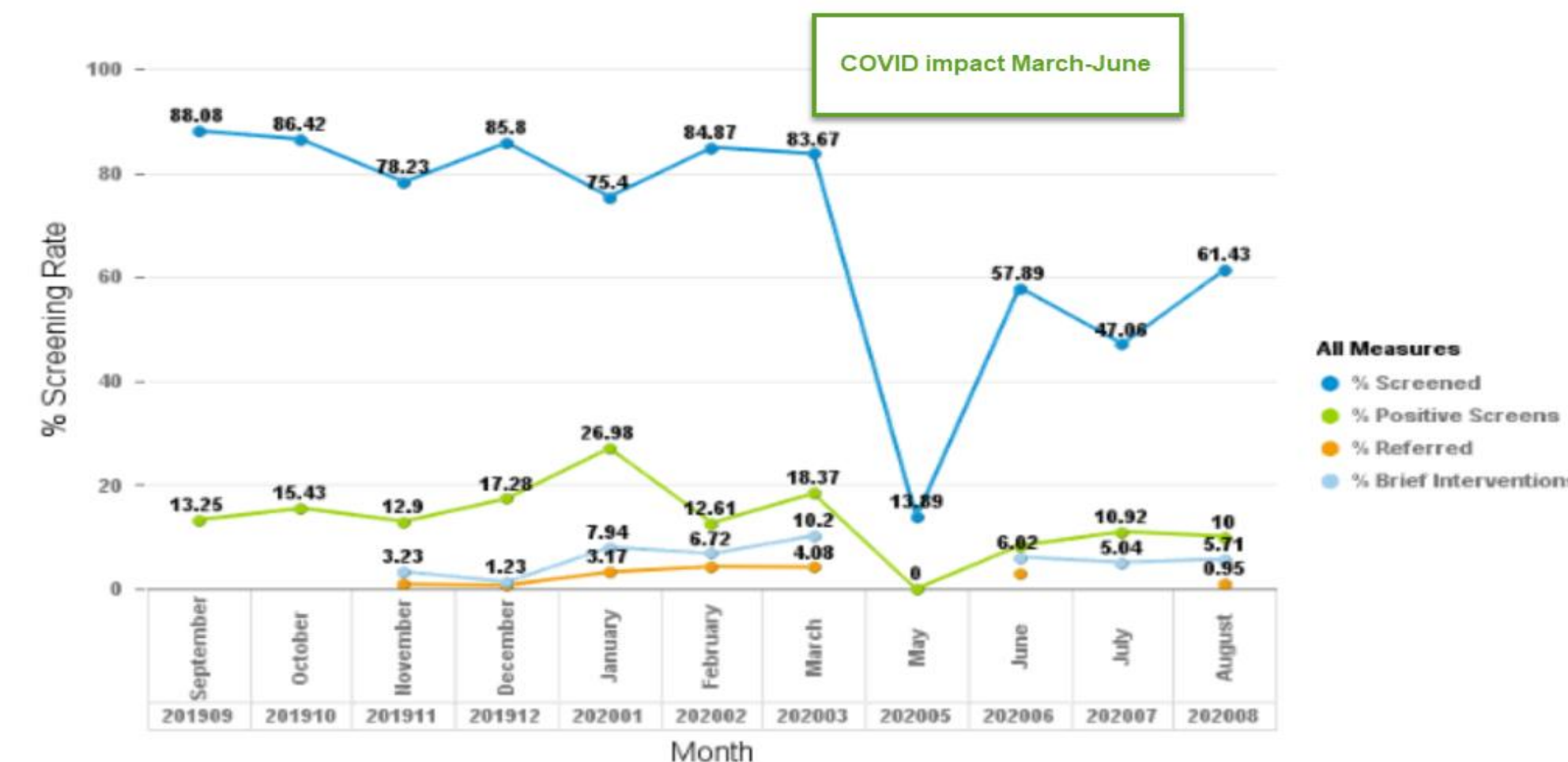
Workflow and Trending Data



MMP PORTLAND PEDIATRICS



MMP SOUTH PORTLAND PEDIATRICS



Countermeasures		
By When & Status*	Deliverable	
End Q1	Data requests completed. SBIRT training program developed and initial training completed for pilot site providers and staff. SBIRT workflow draft developed and screening tools designed.	
End Q2	Track SBIRT (CRAFFT screening) at pilot sites, identify and troubleshoot implementation barriers/challenges. Virtual site visits from external consultants to study workflows and practice scripting for MAs and providers as needed. Finalize workflow. Monthly coaching huddle calls with external consultants to discuss progress. **virtual site visits d/t COVID	
End Q3	Track SBIRT (CRAFFT screening) at pilot sites, identify and troubleshoot implementation barriers/challenges. Monthly coaching huddle calls with external consultants to discuss progress.	
End Q4	Track brief intervention/referral to treatment at pilot sites, plan for spread across MMP FY21.	
Outcomes		
<ul style="list-style-type: none"> • CRAFFT Screening Rate Aug 2020; MMP Overall: 68.5% • SBIRT Provider Education Aug 2020: 100% of pediatricians trained in SBIRT 		
SBIRT Rates: Aug 2020	MMP Portland Peds	MMP S. Portland Peds
CRAFFT Screening Rate	82.3%	61.4%
Positive Screening Rate	13.3%	10.0%
Brief Intervention Rate	8.9%	5.71%
Referral to Treatment Rate	4.4%	1.0%
Next Steps		
<ul style="list-style-type: none"> • Spread to all MMP Primary Care Pediatric practices • Train 100% of MMP Providers through a mix of learning modules and virtual trainings with case studies • Develop and spread adult medicine SBIRT workflow • Integrate NIDA-2 (to be built in Epic), AUDIT, & DAST into MyChart for adult substance use screening • 30% implementation rate of screening eligible patients at adult medicine practices 		

Plan

Do

Study

Act