

WHAT'S HAPPENING

A newsletter for the Maine Medical Center family

Happy Earth Day! Single-Stream Recycling Begins in NICU

Last month, Maine Medical Center began rolling out a single-stream recycling program in its Bramhall Street building. The program started in the Neonatal Intensive Care Unit (NICU) and Continuing Care Nursery (CCN), with the hope that it can spread to other areas of the hospital in the coming months. While the hospital has recycled office paper, cardboard and reusable sharps boxes for years, creating a single-stream recycling program has proved more challenging because of the risk that contaminated

items from patient rooms could get mixed in.

The NICU and CCN have 10 bins set up, each with signs above them explaining what may and may not be recycled according to ecomaine, the non-profit waste management organization that processes and sorts the recyclable products from the hospital. A member of MMC's environmental services team brings the recyclables from the units to the hospital's loading dock for transport to ecomaine.

"Colleagues seem to be happy with the program," said Whitney DeSena, RN, BSN, who championed the NICU and CCN recycling program. "We've had great buy-in and enthusiasm across the units."

DeSena said educating colleagues about what is and is not recyclable is key to the program's success, as federal regulations require hospitals to throw many items away.

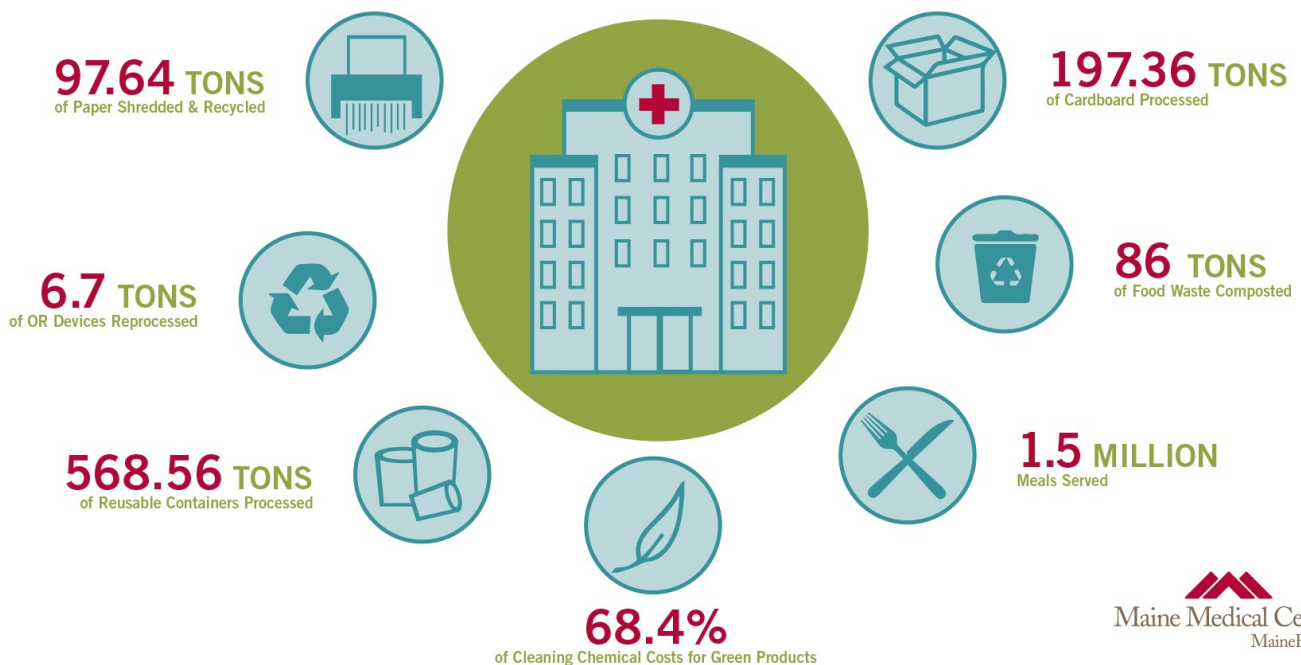
Cardboard, paperboard, rigid plastic containers, glass

and metal are all able to be recycled in these bins. ecomaine is unable to take dirty food containers, straws, plastic coffee cup lids and utensils, Keurig pods, paper towels, paper napkins and toilet paper.

To learn more about what can and cannot be recycled in ecomaine's single-stream containers, visit www.ecomaine.org/101.

Contact Bill Horton at hortob@mmc.org to get involved with MMC's Sustainability Committee.

MAINE MEDICAL CENTER 2018 SUSTAINABILITY BY THE NUMBERS



Celebrating

EMPLOYEE APPRECIATION WEEK 2019

Monday, April 22nd

Sports Day

WELCOME BREAKFAST

6:00-8:30 am
PQ, RS, and South Entrance

**Complimentary Coffee,
Tea, Fountain Drinks**

All day, starting at 6:00 am
Impressions Café

Tuesday, April 23rd

COOKIE DAY

1:00-3:00 Midnight-1:30 am
Main Lobby Impressions Café

**Color for a
Cause**

Wednesday, April 24th

Hat Day

GIFT GIVEAWAY

Noon-2:00 pm
Main Lobby

Hannaford Gift Cards raffle

Thursday, April 25th

Ice Cream Social with photo booth

2:30-4:30
Midnight -1:30 am with gift giveaway
Impressions Café

**Hawaiian
Shirt Day**

Friday, April 26th

Jeans Day

SPECIAL LUNCH MENU

Impressions Café

SPECIAL EMPLOYEE DISCOUNTS

at the Gift Shop, Boutique, Flower Box,
Lobby Kiosk and Pavilion Grill

Saturday, April 27th

Complimentary Coffee, Tea, Fountain Drinks

All day, starting at 6:00 am
Impressions Café

Sunday, April 28th

Complimentary Coffee, Tea, Fountain Drinks

All day, starting at 6:00 am
Impressions Café