



September 2007 | VOLUME 40, NUMBER 9

## MMC Scarborough Surgery Center Introduced to Public

The newest, most modern surgery facility on the East Coast opened for business on August 29, on Maine Medical Center's Scarborough Campus. The MMC Scarborough Surgery Center, at 84 Campus Drive, was introduced to the public on August 8 at a special open house with tours following formal opening ceremonies.

This was a chance for a behind-the-scenes look at an advanced, integrated surgery facility, including places that will soon be off-limits to all but staff and patients. In addition to 10 integrated operating rooms, the facility has private consultation rooms, private pre- and post-op rooms, overnight rooms, and a separate recovery area for children.

SSC CONTINUED ON PAGE 8



A ceremonial ribbon cutting heralds the opening of MMC's new Scarborough Surgery Center, one of the largest freestanding outpatient surgery centers in the country. From left: Governor John E. Baldacci; Vincent S. Conti, MMC President and Chief Executive Officer; Jeff Messer, Chair, Scarborough Town Council; Brad Cushing, MD, MMC Chief of Surgery; Meg Baxter, Chair, MMC Board of Trustees; Robert Ascanio, MD, Anesthesiologist; Marty Riehle, RN, MMC Associate Vice President for Nursing; and Marjorie Wiggins, RN, MMC Vice President for Nursing. AV photo.

## Hale Named Nursing AVP

Maine Medical Center welcomes Kathleen A. Hale, RN, BSN, MS, CNA, BC, as MMC's newest Associate Vice President in Nursing. Hale was selected after an exhaustive search that included the review of more than 40 resumes from around the country, on-site screening, and extensive multi-day interviews for a total of nine highly qualified candidates. The interdisciplinary interview process included representatives from the nursing staff, physicians, senior management representing the majority of clinical and support staff around the hospital, and nursing leadership. Hale will join Marty Riehle and Shiela Parker, both of whom serve as Associate Vice Presidents of Nursing.

Hale comes to MMC from Southern New Hampshire

HALE CONTINUED ON PAGE 8

  
**Maine Medical Center**  
*centered around you*

[www.mmc.org](http://www.mmc.org)

# Retirement Receptions

Within the last year, the Honor to Sustain Committee and Human Resources started looking at ways to more appropriately and consistently recognize employees who are retiring from Maine Medical Center. The members of this Committee felt that MMC should formally acknowledge this important event as a way of honoring those employees who have given many years of dedicated service to MMC. As a result, the Honor to Sustain Committee developed a program and presented it to the Operational Leadership Team, who were fully supportive of the idea. This work resulted in a new program for FY08.

Retirement Receptions will be held quarterly in the Dana Center Lobby and will be hosted by the Honor to Sustain Committee and Human Resources. Each reception will recognize those employees who are scheduled to retire within the next three months. For employees retiring with more than 20 years of recognized service at MMC, there will be an additional acknowledgment including the following special retirement gifts based on years of service:

- 20-29 years of service: Framed Picture of MMC
- 30-39 years of service: Mantel Clock
- 40+ years of service: MMC Captain or Rocking Chair

For the purpose of the Retirement Reception Program, a retiring employee is eligible if:

RETIREMENT CONTINUED ON PAGE 5

# eICU Expands Service Area

Earlier this summer, two more hospitals – Waldo County Hospital in Belfast and Southerm Maine Medical Center (SMMC) in Biddeford – joined the MaineHealth VitalNetwork system. The VitalNetwork allows remote monitoring of patients in multiple locations from a command center, or eICU, staffed by intensive care physicians and nurses. The eICU is located on Washington Avenue in Portland.

The MaineHealth VitalNetwork now supports a capacity of 84 patients in nine intensive care units at six different facilities throughout the state. In addition to Waldo County and SMMC, the VitalNetwork is in use at Maine Medical Center, Miles Memorial Hospital in Damariscotta, and St. Mary's Regional Medical Center in Lewiston.

Every activation employs considerable resources, but SMMC's activation was even more challenging. For the first time, VitalNetwork was activating an organization that already used a fully integrated electronic documentation system. Instead of staff and physicians making a transition from paper to an electronic system, it was a marriage of one electronic system to another – not a simple task! Under the tutelage of Michael Shaw, MaineHealth VitalNetwork's Project Manager, the complex activation plan took shape. At the heart of this undertaking was the shared understanding of how the system could assist the on-site team in providing for the best possible patient outcomes.

The MaineHealth VitalNetwork does not replace local physicians, but it does give them the benefit of having specialist physicians and trained intensive care nurses “watching” their patients – quite literally at times: the system features audio and video connections to each patient room, as well as continuous monitoring and tracking of patient conditions. It allows for the display of trended information in real time, and uses visual alerts to announce any problematic change in the patient's condition.

The intensivists physicians and nurses working in the eICU have the benefit of an extensive clinical decision support system from VISICU, the manufacturer of the technology. The system compiles and provides the latest clinical information on any situation that might arise in the intensive care unit, including “best practice” treatment guidelines and links to the latest medical literature. Other portions of the VISICU product allow for powerful data retrieval, report generation, and information for quality management projects. ■

# Students Wrap up Summer Fellowship Program at MMCRI

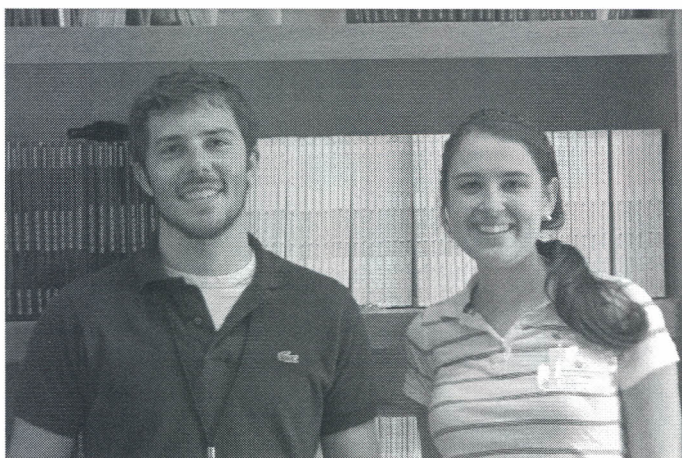
Christian McIntire of Freeport and Carla Canepa of Southport recently completed a 10-week fellowship that began in early June at the Maine Medical Center Research Institute (MMCRI) in Scarborough. They were chosen as 2007 Alvan T. and Viola D. Fuller American Cancer Society Junior Research Fellows. As Fellows, each student received a \$4,000 grant from the American Cancer Society's New England Division.

McIntire worked on a project titled "Notch Signaling and Non-Classical FGF1 Release" to study cell-to-cell contact and how signaling between cells leads to tumors, under the guidance of Igor Prudovsky, Ph.D. McIntire graduated from Freeport High School in 2004, and is currently majoring in Honors BioPharmaceutical Sciences, a new program offered at the University of Ottawa in Canada. In 2006, McIntire attended the Summer Student Research Program at MMCRI.

"Participating in the program last summer opened my eyes to the prospect of research as a fulfilling career," says McIntire. "Since then, I have found myself increasingly motivated by a fascination with basic research, especially in the area of cancer biology and the mechanisms leading to the development and progression of cancers."

Canepa graduated in 2004 from Northfield-Mt. Hermon School in Northfield, Massachusetts, and will be a junior at Connecticut College in September 2007, pursuing a degree in Biochemistry and Molecular Biology. This summer, she worked with MMCRI scientist Jeong Yoon, Ph.D., studying human breast cancer cells.

MMCRI FELLOWS CONTINUED ON PAGE 5



Christian McIntire and Carla Canepa recently completed summer internships at the Maine Medical Center Research Institute in Scarborough. Their 10-week program, which began in June, focused on the study of cancer cells.

# One Person Can Make a Difference



Mary Dowey, Environmental Services, center, with Cindy Bridgham, RN, MMC's Clinical Risk Manager, and Jere Hoover, from the March of Dimes. AV photo.

Mary Dowey, Environmental Services, has been a long-time supporter of the March of Dimes. The MMC walk team has been fortunate to have her—she alone has raised **\$15,578** for the March of Dimes, with records going back to 1998. She continues to be among the top three walkers for dollars raised in the Greater Portland annual walk.

For more than 60 years the March of Dimes has been committed to neonatal research, patient advocacy, and education.

If you ask Dowey why she continues to do this work, the answer is simple. "It's for the babies," she says. Thank you to those who have supported her over the years. ■

## New Director of Nutrition Services

Jane Ewing, BS, MBA, has accepted the position of Director of Nutrition Services at Maine Medical Center. She is currently the Director of Nutritional Services at McLeod Regional Medical Center, a 460-bed hospital in Florence, South Carolina

Throughout her career, Ewing has held a series of progressively responsible managerial roles in Nutrition Service departments of hospitals in South Carolina, North Carolina, and Florida. She will start her new duties at MMC on September 4, after which she'll receive a more formal introduction to Maine Medical Center, the staff, and her colleagues. Watch next month's issue of *What's Happening* for a profile on Ewing.

"I want to express my appreciation for the work of the management team in the Nutrition Services Department," says Michael Ryan, Vice President of Operations. "This great team has continued to keep us and our patients well-nourished, and maintained the smooth operations of the department on all campuses. Thank you!" ■

## MMC Celebrates National Rehabilitation Week

Rehabilitation Medicine staff are proud to provide "patient centered care" through medical expertise and modern technology. As a team, they work together to help provide patients services they need when life has thrown them a curve.

Do you ever wonder what happens to a patient when medical stability has been attained yet he or she is not functioning at the level they were prior to admission? How does one handle not being able to walk ever again? How does one handle being paralyzed on one side of his/her body? What is it like to not remember your son or daughter after sustaining a brain injury? Our patients face challenges such as these every day and it's these challenges that Maine Medical Center Rehabilitation Medicine Division staff help patients and families to overcome.

MMC's Rehabilitation Medicine Division includes 75 staff members. This professional team includes physical therapists, physical therapist assistants, occupational therapists, occupational therapy assistants, speech language pathologists, administrative assistants, rehabilitation aides, program managers, and administrative staff. Our therapists' skills span the entire patient care arena from intensive care to outpatient clinics – skills that range from 30 years of experience to entry level.

Rehabilitation programming encompasses a broad spectrum of services to include patient evaluation, therapeutic intervention, equipment/environment modification, and in some instances,

REHAB WEEK CONTINUED ON PAGE 11



MMC's Rehab Team gears up for National Rehabilitation Week. AV photo.

“I’ve been interested in medicine and particularly cancer since I was a freshman in college after reading the book, *One Renegade Cell*,” says Canepa. “Since then, I’ve been known to my friends as the ‘cancer freak’ who is always looking for articles on cancer and sharing my passion for science. My ultimate career goal is to make significant advances in the cure for cancer.”

The Fuller-American Cancer Society Fellowships offer grants to gifted young undergraduate students, introducing them to basic cancer research. The Fellowship began in 1967, when Alvan T. and Viola D. Fuller made a major gift to the American Cancer Society to advance cancer research. Alvan T. Fuller grew up in the Boston area and attended Malden public schools. A pioneer in the automobile industry, he became one of the foremost dealers in the U.S. of Packard Motor Cars. In 1914, Mr. Fuller was elected to the Massachusetts House of Representatives for two terms. He later served two terms as Governor of the Commonwealth.

Research is a tradition at Maine Medical Center (MMC) in Portland. In the early 1980s, MMC’s commitment to research and education led to the development of the Maine Medical Center Research Institute (MMCRI), Maine’s only hospital-based research center. MMCRI has played an important role in researching and developing new treatments that are now being used by hospitals across the nation. Because MMCRI is part of MMC, these discoveries are often available early – and sometimes first – to the hospital’s patients. A strong partner in New England, MMCRI is a member of collaborations involving the University of Maine, The Jackson Laboratory, Dartmouth University, University of Vermont, University of Massachusetts, University of Connecticut, Brown University, and others. ■

---

## Clinical Ethics in Maine

Save the dates October 10 and 11 for an event focused on developing and sustaining clinical ethics programs at health care institutions in Maine and across the region. The conference takes place in Freeport.

- Up-to-date information on essential topics
- Workshops on running an ethics program
- Starting an ethics committee
- Developing a consult service
- Rural settings and smaller facilities

Conference information can be found at [www.mmc.org/clinicaethics](http://www.mmc.org/clinicaethics). ■

## Date for Owen Wells Conference Set

The Owen W. Wells Annual Pediatric Conference will be held Friday, November 2, at the Sheraton South Portland. This year’s conference theme is “Taking Care of Children: Topics in Pediatric Acute Care”. The keynote speaker is Michael W. Shannon, M.D., MPH, Director, Center for Biopreparedness, and Co-Director, Pediatric Environmental Health Center, at Children’s Hospital in Boston. His presentation is titled “Community Response to Bioterrorism or a Mass Casualty Event”. Registration brochures will be mailed in early September. For more information, contact Jill Prescott at [prescj@mmc.org](mailto:prescj@mmc.org) or 662-6914. ■

---

### RETIREMENT CONTINUED FROM PAGE 2

- they are vested in MMC’s Pension Plan, and
- they begin collecting a MMC pension immediately following their retirement.

We are tentatively planning the first quarterly MMC Retirement Reception to be held in late September 2007. Stay tuned for more information. If you are planning to retire from Maine Medical Center in September, October, November, or December, please contact Sandy Cushman at 662-4570 as soon as possible. ■

# Digestive Health Center Established at MMC

The Maine Digestive Health Center is well on its way to positioning itself as an important clinical resource at Maine Medical Center. In 2004 the initial concept was derived following engagement of a consultant funded by a grant through MMC's Clinical Strategic Services Plan. The mission of the Maine Digestive Health Center is to foster collaboration and service line development between all the necessary disciplines that provide effective, safe, evidence-based care for patients with diseases of the GI tract, liver, gallbladder and pancreas.

The leaders of the Digestive Health Center are Michael Roy, MD, Division Director of Gastroenterology, and Dougald MacGillivray, MD, Co-director of Surgical Oncology. Working together with gastroenterologists, surgeons, radiologists, oncologists, pathologists, anesthesiologists, nurses, and other specialists, Drs. Roy and MacGillivray will ensure that current research and the most advanced medical care are incorporated into every patient's evaluation and treatment in a compassionate, individualized manner. Pediatric specialists in these areas are also a key part of the center.

During the initial development of the Maine Digestive Health

Center, consultants and the steering committee identified six clinical focus areas that warranted particular attention. The six focus areas are gastrointestinal bleeding, colorectal cancer, chronic liver disease, pancreaticobiliary disease, esophageal disorders, and inflammatory bowel disease.

In the past six months, the Maine Digestive Disease Health Center has hired staff and extended its work into creating evidence-based clinical pathways. The GI Bleed team now has Caroline Baker, NP, for consultation within the hospital, for inpatients and emergency department patients. The center also now has a full-time program manager, Rosalyn Webb, RN, BSN. Both work closely with physicians and staff.

The GI Bleed Team has recently presented the initial draft of an order set and an evidence-based clinical pathway for patients presenting with gastrointestinal bleeding. Following initial feedback and revision, the team hopes to have this pathway operational within MMC by year's end.

The Pancreaticobiliary Center (PBC) cares for patients with pancreatic and/or biliary disease on an inpatient or outpatient basis. The work of the PBC, published in numerous journal articles and often presented at national meetings, has garnered an

international reputation. Patient referrals come from all over Maine and New Hampshire. Douglas Howell, MD, Director of MMC's Pancreaticobiliary Center as well as the Advanced Interventional GI Fellowship Program, and Dr. MacGillivray are currently working with a multidisciplinary group to create an evidence-based pathway for patients seen at MMC with acute pancreatitis.

Like the Pancreaticobiliary Center, the Virology Treatment Center (VTC) was established prior to the development of the Maine Digestive Health Center. The VTC is located on Gilman Street. Alan Kilby, MD, and Jennifer Rogers, NP, evaluate and treat viral hepatitis and HIV patients. Dr. Kilby fosters a "team approach" which utilizes the unique talents of the physician, nurses, nurse practitioner, social worker, and practice coordinators. This is important since patients often deal with such issues as substance abuse, psychosocial issues, lack of insurance, and the side effects of treatments used in these diseases.

Clinical research is also a key function of the VTC. Currently, the center is participating in two clinical trials for Hepatitis C. These trials allow patients in the community to get treatments to which they ordinarily would not have access. They

DIGESTIVE DISEASES CONTINUED  
ON PAGE 7

also provide financing for education. Dr. Kilby and Ms. Rogers are currently working on an evidence-based clinical pathway for patients with Hepatitis C.

There are many other exciting things happening within the Maine Digestive Health Center. In July, the VTC hosted an annual liver seminar. On October 17, the Maine Digestive

Health Center will hold the bi-annual GI Symposium in the Dana Center for healthcare providers. In November, the Maine Digestive Health Center, working with the Crohn's and Colitis Foundation of America, will host a day-long conference for patients with inflammatory bowel disease and their families. Watch *What's Happening* for more information! ■

## Clinical Research Course

The 2007-2008 Clinical Research Course will be offered on September 19 and November 9 at MMCRI in Scarborough from 8 a.m. to 4 p.m. The course is geared toward upper-level residents, fellows, post-docs, and junior faculty relatively new to clinical research. To pre-register for one of the above dates, contact Gail Norton, [nortog@mmc.org](mailto:nortog@mmc.org). For questions, contact Louise Marcotte, Director, Office of Clinical Research, 885-8242 or [marcol@mmc.org](mailto:marcol@mmc.org). ■



Amanda Stevens presented a contribution to the Laura Vogel Fund to NICU Nursing Director Jani Kinder and Division Director Peter Marro, MD. The contribution represented proceeds from the Bayside 5K run in Vogel's memory and also supported the Bayside Community Development Fund. Vogel's parents, Monty and Beth, were also on hand to thank Stevens and say hello to the NICU staff members pictured above.

## Considering a Joint Replacement?

### Learn More at New Class

The Joint Replacement Center at MMC will offer a community class at the MaineHealth Learning Resource Centers this fall. The free class, "Welcome to the World of Joint Replacements", is targeted to people – such as baby boomers – who are beginning to think they might benefit from a new hip or knee. There will be an introduction to anatomy, a show and tell of new joint components, and a discussion about what to expect in the hospital and following discharge

The class will be taught by Sheila Szafran, MS/OTR/L, Program Manager. The first class is September 27 from 6-7 p.m. at the Scarborough campus; the second is October 25 from 6-7 p.m. at the Falmouth Campus. The class will be offered monthly at alternating locations. To sign up, please call 662-4372. ■

Medical Center (SNMC), a 188-bed community hospital and regional referral center for southern New Hampshire. In her most recent position as Divisional Director, Maternal Child Health, Hale was responsible for the operational management of the service including capital planning, resource management, and community education programs. While at SNMC, she was project manager for the renovation of the pediatric unit as well as the ongoing construction of their NICU and LDRP units, expected to be completed in 2009. Hale was also project manager for several construction and renovation projects during her tenure at Concord Hospital, where she served as the Director of Maternal Child Health.

Hale will assume her responsibilities at MMC on Tuesday, September 4. Please join us in welcoming her to MMC on Thursday, September 13, in the Dana Center Lobby from 1–3 p.m. ■

For families, there is a real-time automated information system on which they can visually track their loved one's progress through their stay. A Customer Service Representative will be responsible for making sure that all the patients' and families' non-clinical needs are met. In addition, there is convenient and free parking, a Cafe and outdoor patio, a children's area and playroom, a TV lounge, and quiet waiting areas. Everything has been designed – by staff, physicians, patients, and families – to make the surgery experience as comfortable, safe, and convenient as possible.

“We started this project because our operating rooms at our Brighton and Bramhall campuses are running at capacity,” says MMC President and Chief Executive Officer Vincent S. Conti, “and demand continues to increase. It will improve access to the operating rooms on our main campus, minimizing delays and cancellations. As importantly, the technical capabilities and patient and family amenities of the Scarborough Surgery Center will improve the experience for outpatient surgery patients, and also will allow us to accommodate more complex inpatient surgery cases and emergency cases at our main campus.”

MMC will close the five operating rooms on its Brighton Campus and consolidate that activity in Scarborough, along with some procedures from the main campus. Overall, our operating room capacity will increase from 26 to 31 rooms.

The facility and its operating model are based on the very successful Brighton Surgical Center, which has earned a stellar reputation among surgeons and patients for clinical quality, efficiency, and customer service. The staff from Brighton will move to the new facility, ensuring a continuation of that service. Also moving to the new facility is Brighton Bear, rechristened “Buddy Bear”. Children who undergo surgery at the facility receive the plush bear to comfort them, and it often is used to help them understand what they will be experiencing by using the bear as a model.

The Scarborough facility is part of a larger construction and renovation project supported in part by a capital campaign, “Building on Excellence”. The successful \$24.2 million campaign included support for the Scarborough Surgery Center; new women and infants facilities at MMC's Bramhall Campus; a new parking garage, helipad, Emergency Department expansion, and other projects at the Bramhall Campus; and Spring Harbor Hospital. ■



# HR Corner

## WOW! Rewards

Are you working toward accumulation of your points? September 30 is the WOW! Rewards deadline to earn up to \$130. If you are an MMC employee enrolled in the MaineHealth health insurance plan, your reward will be paid in a lump sum in January 2008. Go to [www.mainehealth.org/wow](http://www.mainehealth.org/wow) and click on Maine Medical Center. Questions? Call 1.866.WOW.6090 or email: [mainehealthwow@mmc.org](mailto:mainehealthwow@mmc.org). If you've had your annual physical, blood pressure and cholesterol check, a dental check-up, flu shot, and you wear your seatbelt, you are already good for 17 points and \$65! Log on before September 30 to record your points so you won't miss out on the January bonus.

## New MaineHealth Benefit

Have you noticed posters in your work area announcing the new health and wellness program sponsored by MaineHealth and Hannaford? The Healthy Living Club is a free, personalized health improvement program that connects its members with local community resources that best meet their health needs.

If you or a family member face challenges with heart disease or diabetes, the Healthy Living Club is there for you. The Healthy Living Club is also dedicated to helping all individuals improve upon and maintain their overall health and wellness. All MaineHealth employees and their family members are welcome and encouraged to join.

Membership in the Healthy Living Club connects you

with information, resources and support to live a healthy lifestyle. Your membership gives you access to:

- An individualized self care report,
- Information about local community classes and activities,
- Great incentives, including gift certificates and a free pedometer,
- A newsletter packed with useful health information for you and your family,
- An interactive website, member blog, and "Ask the Doctor" feature, and
- A diabetes and heart disease health resource specialist who will help you find information on programs and activities to help you live well.

There is nothing to lose and everything to gain. It will result in a healthier you! To enroll for the program, just take one of the tear-off forms from the poster and mail it in to the address on the form. You may also e-mail [hlc@mmc.org](mailto:hlc@mmc.org) or call 541-7558.

## 2008 Annual Open Enrollment

Once again Annual Open Enrollment is around the corner! This year, Open Enrollment will take place from October 29 through November 19. Employees will be able to add or drop dependents, change benefit plans, or make any other changes that they wish to be effective January 1, 2008. Watch for posters and announcements which will advise of benefit fair dates at all campuses. Employees will use the Lawson Self Service online enrollment system to make their changes for 2008.

## Benefit Plan Review

As we approach the last quarter of 2007, you may wish to review your current benefit plans to determine whether you can take advantage of any last minute tax-savings for this year, as well as get any claims in order, which need to be submitted to any of the benefit plans. Some questions to ask yourself are:

- Can I take advantage of putting more pre-tax money into my 403(b) plan?
- Do I need to increase federal or state tax withholding for the last quarter of the year in order to minimize potential tax liability for 2007?
- Do I have receipts for expenses which need to be submitted to CBA/EBPA for health, dependent care, or adoption assistance reimbursement plans?
- Do I have outstanding Anthem or Delta Dental expenses which need to be filed with those insurance carriers?

It is also time to begin thinking about your benefit plan selections for 2008 and how you can maximize your employee benefit program at MMC.

## Lincoln Alliance 403(b) Plan

If you have been waiting to join the 403(b) Plan, don't wait any longer! You could be losing out on MMC matching contributions! You don't need to be an expert in investing, you just need to understand a few fundamentals. Jenny Billings, representative from Lincoln Alliance, will come to MMC to meet with you at your convenience. Please contact her at 774-1113 to request an appointment. The next scheduled information session will be held on September 22 in Dana Center Classroom #10 from 1-2 p.m. Please join us! ■

# Marketplace

So that everyone has an opportunity to use the Marketplace, ads may be placed once. Repeats will be permitted only as space permits.

## FOR SALE

Collection Longaberger baskets: All sizes & series. I never use them and now it is time to move them on! Come do your Christmas shopping early. Call 671-4723 or [YankLady@aol.com](mailto:YankLady@aol.com).

Motorcycle. Hyosung 2004 Comet GT 250. Low mileage. Not used this season. Red. Looks new! Awesome fuel saver. Great beginner bike. Asking \$3,000. Call 929-5670.

Mazda Tribute ES. V6, auto, 4WD, leather, loaded, rear privacy glass. 48K miles. Like new. Towing package (hardly used). Ex cond, below book, clear title. Price is FIRM at \$13,500. Call 541-7533.

Dell Media Center Desktop. Includes: monitor/keyboard/mouse, 17" flat panel display screen, multimedia TV tuner with remote control, 160GB serial ATA hard drive Intel Pentium D 820 (2.8GHz) w/Dual Core Technology, 256MB ATI hyper memory PCI-express X16, Radeon X600SE, Microsoft Windows XP Medical Center Edition, 16X DVD-ROM, 16X DVD+/-RW, and more! \$600. Call 662-7050 or [kanej@mmc.org](mailto:kanej@mmc.org).

98 Ford Escort ZX2. Burgundy. New tires, new front brakes. Stickered through June 08. Good cond. Good gas mileage. Asking \$2,000. Call (360) 333-2538.

Ethan Allen barstools. 4 beautiful iron scrollwork, brown leather seats. Hardly used; new over \$400 each. Selling at \$250 each. Come see! Call 772-3730.

Stainless steel roaster from Williams Sonoma. Used once. \$100. Call 772-3730.

VW Beetle. Black with gray cloth interior. 79,500 miles. Exc condition. \$6,500 OBO. Call 625-8913.

2004 Keystone Springdale 28-ft travel trailer. LR and BR slides. Queen bed w/ 5 ft closet and 4 drawers, padded window seat.

Oak kitchen cupboards, stove, oven, micro, ref/freezer. Pantry and 60/40 sink. Full bath w/shower. Awning, two entry doors, lots of storage. Well cared for & in exc condition. Must sell; moving to Florida. Asking \$15,900. Call 2332147 or e-mail [mcd33057@aol.com](mailto:mcd33057@aol.com).

GMC Yukon 1999 Black. Great condition, one owner. 126K miles. \$7,000 OBO. Call 655-6132.

Sears Sport luggage carrier. 15 cav. \$100. Extension ladder. 35' Werner Aluminum \$200. Saxophone. Vito Alto \$300. Clarinet. Premier white \$300. Call 767-0156.

Gorgeous diamond & blue sapphire wedding band. 14K yellow gold. Worn a few times. Looks brand new. Size 8, can be sized. \$350. New in June. Will sell for \$175 OBO. Call 671-5891.

Dell Laptop computer: \$350. Call 615-9891

93 20' McGregor Sailboat + trailer: \$4,000. Call 615-9891

82 26' Motor home: AC & generator \$5,000. Call 615-9891

1995 GMC 4X4 pickup: \$5,000 Call 797-8328.

73 Ford Mustang convertible: \$1,500 Call 797-8328.

1984 26' Motor home: \$5,000. Call 797-8328.

## FOR RENT

3 apts in Portland. Available now. 5 minute walk to MMC. Lg 2 BR-\$1099/mo, Lg 1 BR-\$ 799/mo, Studio apt-\$599/mo. Will rent at reduced prices and flexible terms to all MMC employees. Call 756 2297 or e-mail [sdg@maine.rr.com](mailto:sdg@maine.rr.com).

Woodfords. Portland. 2 BR, lg, updated, 1<sup>st</sup> fl. LR, DR, Eat in K, gas stove, d/w, Hdwd, thermopane windows, basement, storage, W/D hookups. Off street pkg, \$995/mo, N/S, Avail. 9/1. Call 767-3003.

Deering St. Lg 1 BR apt in historic brick building. Hdwd. Big BR w/bay window & new K. Walk in closet,

Hdwd. Great office! Avail. 9/1 for \$1,300 includes H/HW. No dogs & N/S. Call 671-4723 or e-mail [YankLady@aol.com](mailto:YankLady@aol.com).

Town House. 4 BR off Back Bay. Remodeled K & 1.5 BA, hdwd, high ceilings, W/D, N/S N/P, off street pkg. Available 8/1. \$1,600. Call 899-0111.

Woodfords neighborhood apt. 2BR spacious, quiet, charming, off street pkg, N/S & no dogs. \$895/mo. Util. not incl. Call 281-3559.

Avail Oct. 3 BR apt in Westbrook. H/HW Inc, W/D Hook up, Pkg for 2 in the winter mo. Lg yard to share. Some storage. \$1,100/mo plus sec. Call 329-5408 or ext. 5822.

240 Concord St. 4 BR house w/custom K, 2 BA, DR, sitting/library, LR, laundry room, hdwd, many architectural details. 2 car garage. Call 286-4652 or e-mail [dfroehlichxx@hotmail.com](mailto:dfroehlichxx@hotmail.com)

Chadwick and West Streets. Lg 3 BR apt, on 2<sup>nd</sup> & 3<sup>rd</sup> fl. owner-occupied Victorian house. w/1 BA; ½ BA w/laundry hook-up; pkg space in garage. \$1,100/mo + util. Call 774-1486 (days) or 761-7907 (eves) or e-mail [adenham@dougden.com](mailto:adenham@dougden.com).

1 BR apt, 3<sup>rd</sup> floor "in law", has own entrance, K, LR, BA in lg. Victorian home. \$500/mo. Call 773-4216.

84 Park Ave. 3 BR apt, renovated hdwd, 1<sup>st</sup> fl., coin op W/D. All 3BRs are equal in size. N/S. Cats accepted \$1,100/heated + sec. dep. Call 712-0771.

West End. 3rd fl. apt w/new carpeting and linoleum, lg BR w/lots of storage, lg BA w/ shower & bathtub, & open K & LR. \$900/mo. inc heat & off street pkg for 2 cars. 1 yr lease. Sec. dep. & first mo. N/P. Call 522-4345 or e-mail [livrosechase@yahoo.com](mailto:livrosechase@yahoo.com).

2BR w/W/D, AC, all utils incl. pkg for 2 & storage. 3 mo. lease then month to month. Must see! \$1,400/mo. Call 749-0376.

Highland Woods 185 Prospect St. 2 BR, 1 BA updates to K w/pantry & BA, DR & LR. Off-st. pkg for 2 + storage. Avail. 09/07, N/S N/P. \$995./mo + heat & util. Call 772-9062.

Lg 1 BR apt w/W/D, garage, priv. 3-season porch in quiet owner occupied building. N/S, N/P. Lease & sec. dep. Req. \$775./mo. + util. Call 775-7427.

So. Ptd furn condo near Casco Bay bridge. 2-BDR, 1.5 BA, open concept, hardwood, granite, 2 car garage. \$1,200./mo.+ util. Call 899-2939.

Cape Elizabeth. Near South Portland line off Mitchell Road. Cozy & clean 3 BR ranch. Garage, deck, finished basement, oil heat. N/P N/S \$1,350 + util. Avail. 9/1. Call 450-8290.

Near MMC. 2 BR, renovated, new K & BA. Hdwd w/tile. DW, W/D, off-street pkg. N/P, N/S. \$1,100/mo. + util + sec.dep. Call 450-3522.

Woodfords area. 2 BR – 1 lg, 1sm. hdwd & vinyl floors, eat-in K w/DW, W/D, basement storage, off-street pkg, a/c, monitor heat, N/P N/S. \$995/mo. + util + sec dep. Call 450-3522.

Cape Eliz. house. 3 BR Oil heat, N/P, N/S. Lg lot off Mitchell Rd. \$1350/mo + util. + sec. dep & lease. Call 799-5711 or 450-8290.

172 Concord St. ½ duplex, 3 floors LR w/fplc, DR, K, 3 BR, office & finished room. N/S, N/P avail. 10/01 Call 774-7685 or e-mail [bcope@maine.rr.com](mailto:bcope@maine.rr.com).

So. Ptd. 1 BR cape N/S N/P \$110/mo + util. & dep. Call 799-0594.

## SEASONAL RENTAL

OOB Beach House: 5 BR, 2 BA, avail. for winter (September – May) rental. lg LR & front porch, lg DR w/ custom built table, eat in K, & new appliances. Furn. & many extras. \$1,000 +Util. Call (617) 323-0063 or e-mail [pchase@vipdesk.com](mailto:pchase@vipdesk.com).

Harpwell. Oceanfront, 2 BR, 4 season cottage avail. for off-season rental Oct-May, \$800/mo. + util. Call 797-8919 or e-mail [marwat20@hotmail.com](mailto:marwat20@hotmail.com).

Townhouse on golf & beach resort, 3BR, 3 BA, flat screens. Call (617) 519-6688.

Little Sebago Lake in Gray winter rental. 1 BR remodeled, furnished, winterized cottage with W/D. Sleep sofa in LR. Ice fishing, skating, cross country skiing, etc. on the lake. Parking & snow plowing included. N/S. Sept. 22 - May 31. \$595/mo.+ util. Call 428-3828

## REAL ESTATE FOR SALE

Ptd West End 1BR condo. Hdwd floors, maple & granite, SS appliances & gas stove in K. Efficient Italian heating system, low condo fee (\$125 per mo), prof neighbors and landscaping. \$219,900. Call 772-3730.

Portland Condo. Sunny and spacious 800-sf 1st fl. w/ high end K & BA. Hdwd, tile, granite, wainscoting, moldings & much more! \$194,500 Call 878-2028 or e-mail [terryb@gwi.net](mailto:terryb@gwi.net).

## ROOMATE

Room in quiet, beautiful West End house. \$625/mo + util. (gas/electric) w/priv. BA, shared K, LR, W/D, off st pkg. 1<sup>st</sup> mo. & last mo/lease. Avail mid-August/Sept.1. Contact [mcd@ceimaine.org](mailto:mcd@ceimaine.org).

Looking for single & responsible roommate. Standish area. \$500/mo. Call 289-0992.

Apt share for F. Lg 3<sup>rd</sup> fl room in Victorian home 400 sq. ft. Furn. or partially furn. Walk-in closet, private BA with W/D shared K \$650/mo, util. incl. Pleasant Ave. Ptd. Call 232-6016.

Off Brighton Ave. Seeking 1 or 2 (M/F) to share 3BR cape N/S N/P, has W/D & D/W. \$575/mo incl. all util., phone & internet. Sec. dep. & ref. Call 317-1222.

West End. 2BR furnished condo to share. N/S, N/P. Free laundry. \$575/mo + util. dep. & lease. Call 272-5165.

Poland house. 1 BR, tile & exposed beams, access to Thompson Lake and plenty of pkg. N/S. \$875/mo. + util. and dep. Call 998-4992 or 415-7767.

## MARKETPLACE CONTINUED ON PAGE 12

## REHAB CONTINUED FROM PAGE 4

adaptation. Each discipline within the department has its own area of expertise, yet all three work in a collaborative fashion that enhances patient centered care. From bracing to splinting, cognition to perception, language to feeding, mobility to airway clearance, play skills to development and, most of all, from a listening ear to a therapeutic touch, our rehabilitation team works daily to optimize function and quality of life for our patients.

During the third week of September, National Rehabilitation Week, our rehabilitation staff will share what their roles are with patients and within MMC. They also would like to thank all who work with them to help patients and families achieve their goals. Without each and every one of us at MMC, we could not provide the patient centered care that we do every day! ■

# Calendar

## August 29

SSC opens for first patient case.  
See story, p. 1

## September 19

Clinical Research Course  
See story, p. 11

## September 22

403(b) Information Session  
See story, p. 9

## September 27

Joint Replacement Class  
See story, p. 7

## October 4 & 5

Best Practices in Clinical  
Teaching "Healthcare is a  
Team Sport"  
FMI: Call 662-7060

## October 10 & 11

Clinical Ethics in Maine  
See story, p. 5

## October 13

4<sup>th</sup> Annual OctoberQuest  
Dana Center Auditorium  
7 a.m. – 4:30 p.m.  
FMI: Call 662-6203 or  
[www.mmc.org/OctoberQuest](http://www.mmc.org/OctoberQuest)

## October 17

GI Symposium  
Dana Center Auditorium  
7:30 a.m. – 4 p.m.  
FMI: Call 662-6682

## November 2

Owen Wells Pediatric  
Conference  
See story, p. 5 ■



It was a perfect day for a bike ride.... A number of people regularly ride their bikes to MMC, and August 9 was an exceptionally nice day to do so. It's good for you and good for the planet! AV photo.

### MARKETPLACE CONTINUED FROM PAGE 11

So. Ptld lg furn. Room. Nice yard, off-street pkg, convenient, quiet neighborhood. N/S N/P (owner has one cat). \$600/mo inc. util. Call 329-6487.

Furn. room w/ extra storage. Falmouth. \$600/mo w/utilities, internet, linens included. N/S, N/P. Call 831-3498.

Portland. 2 rooms in a lg 4 BR house, shared K & BA \$575/mo. Util incl. Call 409-6042.

Comb. Basement efficiency. BR, LR, Priv. BA, W/D, furn. N/S N/P \$560/mo. util. incl. + sec dep. Call 632-8307.

### WANTED

Companion to share home with elderly woman at Higgins Beach. Free rent in exchange for being available for support evenings and occasional weekends. Call 892-8266 to discuss details. References required.

### SERVICES

Available to take care of 1-2 children full time or before and after care in my Allen Ave. home starting in September. Reasonable rates and excellent references. Call 797-4330 or e-mail [vze525nj@verizon.net](mailto:vze525nj@verizon.net).

Daycare openings in caring family home. So. Ptld. Spaces available for infants through school-age. Call 767-7081.

Looking for a cleaning service? Residential & commercial. Call 749-0376. ■

The deadline for the next newsletter is the second Friday of the month. To submit an item, send it by interoffice mail to the Public Information Department, by email to [marketplace@mmc.org](mailto:marketplace@mmc.org), or by fax to 662-4094.

Look for Marketplace on the Intranet under Quick Links.



Maine Medical Center

22 Bramhall Street  
Portland, ME 04102-3175

The MaineHealth® Family

*What's Happening* is published the third week of the month at Maine Medical Center for members of the hospital community and for friends of the institution throughout Maine and northern New England.

Comments, questions and suggestions may be addressed to the Office of Public Information, MMC, 22 Bramhall Street, Portland, Maine 04102-3175. (207) 662-2196.

Editor: Abby Greenfield