

MaineHealth

## MaineHealth Knowledge Connection

---

Maine Medical Center

All MaineHealth

---

10-8-2018

### COPD Action Plan

Rob Chamberlain  
*Maine Medical Center*

Samantha Marrier  
*Maine Medical Center*

Karin Doehne  
*Maine Medical Center*

Martine Eon  
*Maine Medical Center*

Penny Binette  
*Maine Medical Center*

*See next page for additional authors*

Follow this and additional works at: <https://knowledgeconnection.mainehealth.org/mmc>



Part of the [Respiratory Tract Diseases Commons](#)

---

#### Recommended Citation

Chamberlain, Rob; Marrier, Samantha; Doehne, Karin; Eon, Martine; Binette, Penny; Rousselle, Donna; O'Donnell, Morgan; Gagnon, Linh; and Sharkey, Carole, "COPD Action Plan" (2018). *Maine Medical Center*. 718.

<https://knowledgeconnection.mainehealth.org/mmc/718>

This A3 is brought to you for free and open access by the All MaineHealth at MaineHealth Knowledge Connection. It has been accepted for inclusion in Maine Medical Center by an authorized administrator of MaineHealth Knowledge Connection. For more information, please contact [mckeld1@mmc.org](mailto:mckeld1@mmc.org).

---

**Authors**

Rob Chamberlain, Samantha Marrier, Karin Doehne, Martine Eon, Penny Binette, Donna Rousselle, Morgan O'Donnell, Linh Gagnon, and Carole Sharkey

**Team Members: Karin Doehne MD, Martine Eon, Penny Binette, Donna Rousselle, Morgan O'Donnell, Linh Gagnon, Carole Sharkey**

**Problem/Impact Statement:**

COPD is a significant driver of patient morbidity and mortality, as well as being associated with increased cost utilization. Acute exacerbations of COPD are a common cause for ED utilization.

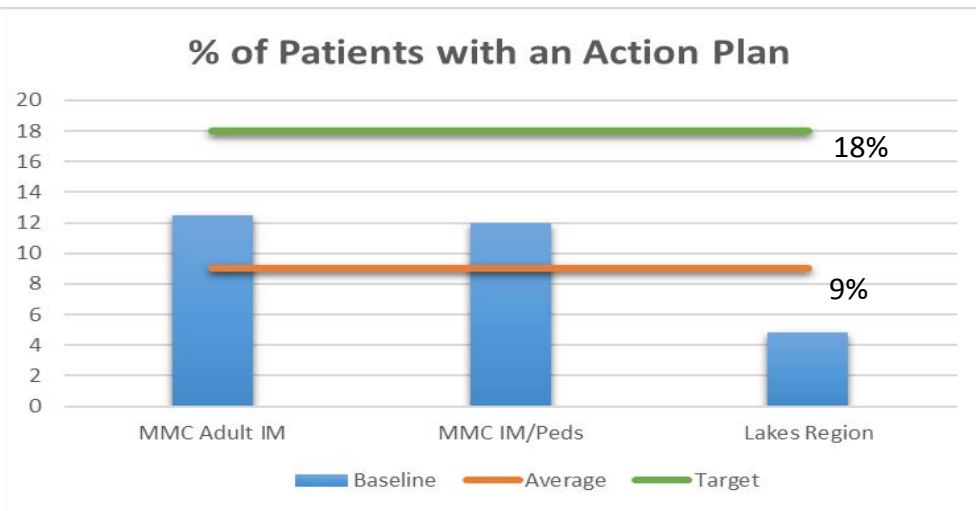
**Scope:**

In Scope: Primary Care adult patients - MMC Adult IM, MMC IM/Peds, Lakes Region  
Out of Scope: Inpatient, admissions

**Goal/Objective:**

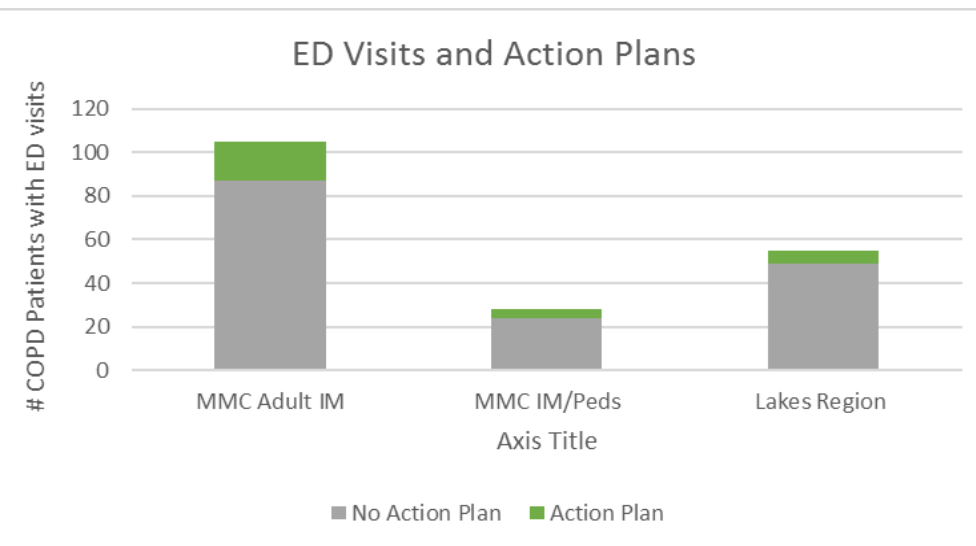
Increase the rate of COPD patients with an Action Plans in Primary Care to 18% by December 31, 2018.

**Baseline Metrics/Current State:**



Literature reviews show that self management tools such as Action Plans have been shown to reduce ED utilization and hospital admissions as well as improve quality of life.

**Root Cause Analysis:**

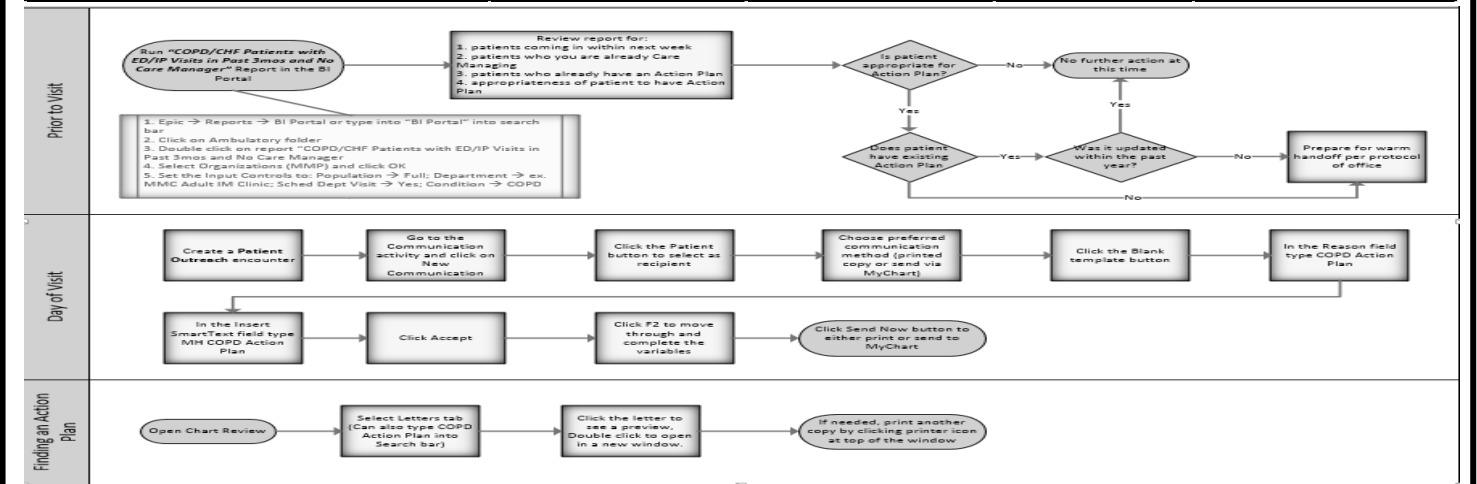


Less than 4% of COPD patients at the pilot sites who had an ED visit for a COPD exacerbation in the past year had an Action Plan at the time of their visit.

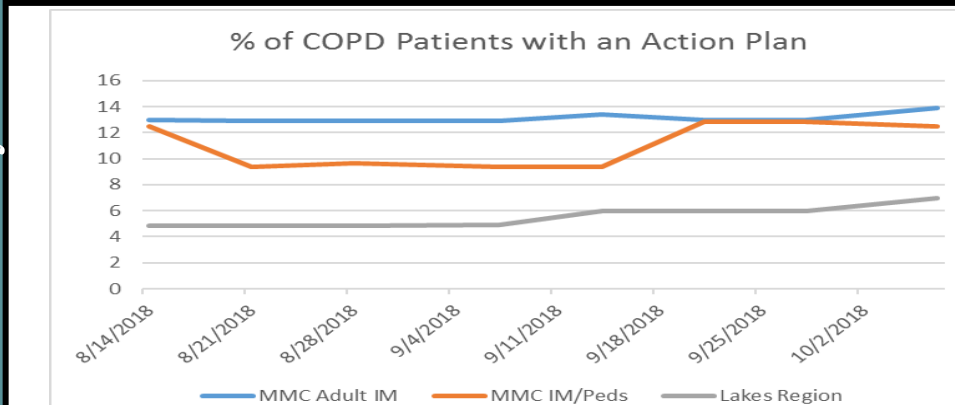
**Countermeasures**

Completion Plan Item (What)	Who	By When	Status	Completion Date
Determine baseline data	Sam	4/1/2018	Complete	4/5/2018
Develop ideal workflow for use of Action Plan	Team	6/1/2018	Complete	6/30/2018
Identify Pilot Sites	Team	6/1/2018	Complete	6/1/2018
Initiate Pilot	Team	8/1/2018	Complete	8/6/2018
Plan for spread	Team	10/1/2018	In Progress	

Do



**Outcomes**



**Increased the rate of Action Plans to 11.1%**

- Barriers:**
- Provider buy in
  - Increased visit time required
  - Epic functionality

Study

**Next Steps**

- Gain increased buy in from providers and Care Managers by providing further education around action plans and inhaler use by January 2019.
- Initiate a small scale spread to a site with a Pharmacist by January 2019.
- Improve Epic functionality including developing a SmartForm for easier documentation by April 2019.

Act

Plan