

# What's Happening

a newsletter for the employees of Maine Medical Center

December 4, 1991

Vol. 22, No. 25

## Maine Medical Center receives honor

The Robert R. Masterton Economic Development Award, given by the Greater Portland Chamber of Commerce, was presented this year to "an organization which quietly but steadily contributes enormously to both the quality and the economic vitality of life in Greater Portland." The organization? Maine Medical Center!

The award was accepted by then Chairman of the Board Merton G. Henry, Esq.

The Chamber cited characteristics that make MMC stand out above others: providing jobs to a large number of employees (we're the area's largest employer), serving a broad area, and emphasizing important community values: education, equal opportunity, and helping to meet employee needs.

**HONOR, SEE P. 2**

## Tissue-typing lab comes home

The Immunogenetics laboratory at the Foundation for Blood Research (FBR) is moving to the Maine Medical Center Research Institute (MMCRI). The move is actually a homecoming, because the lab was "born" at MMC in 1972.

The original lab, under the direction of Donald Leeber, M.D., was an outgrowth of the transplant program at Maine Medical Center. The lab was set up to serve MMC's new kidney transplant program to determine if a donated kidney was "compatible" with the recipient. The lab has played a major factor in the success rate of MMC's transplant program.

In 1975, the federal government ex-

## MMC Social Work director named

Ellen Moscinski, MSW, has been named Director of Social Work at Maine Medical Center.

Moscinski was most recently Manager of



Social Work Services at Mercy Hospital and Medical Center in San Diego, California. She was also an adjunct professor in the School of Social Work at San Diego State University and was an expert examiner for the State of California Board of

Behavioral Sciences. Moscinski has also served as Director of Patient and Family

**MOSCINSKI, SEE P. 3**

panded the standards for histocompatibility labs. To meet these standards, a joint venture between Maine Medical Center and Foundation for Blood Research was formed and the lab moved to a new location in Scarborough in 1979. As the lab grew, more researchers joined the staff, including one with a Ph.D. in immunogenetics. Paula Romano, Ph.D., was the director of the lab until Richard Mahoney, Ph.D., took over in October 1981.

As the current director of what is now the Immunogenetics laboratory, Dr. Mahoney conducts clinical test development, research studies, parentage testing, and disease association with HLA. He is supported by a team of four technologists: supervisors Roberta Emmons, B.A., Shelley Given, B.S., Anne

**HOMEcoming, SEE P. 4**

**Celebrate peace and the holidays! See p. 2.**



## Celebrate peace with the MMC family

Maine Medical Center employees and retirees are invited to share the season's spirit at a Holiday Reception. *A Celebration of Peace* will set the tone for the day and the season.

There will be two receptions on Wednesday, December 11, one for third shift employees and another for the first and second shifts. Those who work on the third shift are invited to a special morning Reception that begins at 5:30 AM and continues until 8:30 AM. Share brunch, the music of a harpist, and good cheer.

Retirees and first and second shift employees will attend the afternoon Reception, from 2:00 to 6:00 PM, where they'll dance to the music of the Tony Boffa Band and enjoy a feast presented by Food Services.

In keeping with an MMC tradition, the Cafeteria will have a festive feeling the day of the Holiday Reception. Contributing to the atmosphere with their renditions of peaceful holiday themes, window decorators will transform the Cafeteria into a "greeting card" to all on Monday, December 9, between 4:00 and 7:00 PM. Refreshments, music, and doorprizes will add to the fun.

So, come to the Holiday Reception! Enjoy the fellowship, share the spirit of the season, and--most of all-- celebrate peace!

### HONOR, FROM P. 1

As northern New England's largest tertiary care hospital, MMC contributes to a strong local hospital industry, drawing related services, nursing and medical education programs, and businesses to Greater Portland. These services bring even more jobs, revenue, and other benefits to the area.

The Chamber added that MMC reaches out to the community in many ways to make Greater Portland a better place. Our Hospital Industries program is a national leader in developing techniques and promoting employment futures for special education students. We've also joined in partnership with King Middle School to help the educational and personal achievement of its students.

The next *Healthviews*, MMC's healthcare discussion television program, is

### Behind Closed Doors:

### A look at Critical Care Medicine

Moderated by Donald Nicoll

8:00 PM, Friday, December 20  
Public Cable Channel 37

The program will be re-broadcast the following Saturday, Sunday, and Monday at 2:00 and 8:00 PM, and Tuesday, Wednesday, and Thursday at 10:00 AM.



The Salvation Army expects to deliver assistance to 1,000 families this year—thousands of children will receive donated toys. Above, Environmental Services employees Sherry Dow and Steve Hightower present some of those donated toys to Salvation Army Capt. James Gingrich. You can bring in your own donations of new toys now through December 18. If you have questions, call Tina Plummer, Environmental Services, x2272. A/V Photo.



## MMC's ATM undergoes a change

There has been an automated teller machine (ATM) at Maine Medical Center since February, 1983. It was originally located on the basement level of the Richards Wing and was moved to the Admitting Lobby in 1985 where it underwent its most recent change.

On Monday, December 2, MMC's "Instacard" machine was unavailable for use for a short time. Management of the ATM was changed from Maine National Bank to Fleet Bank; the new machine includes Yankee 24, Cirrus, and Plus network services.

MMC has so many employees that Fleet felt it was worthwhile to continue the ATM service here. Only two other area banks place ATMs at off-site locations.

Survey results show that most MMC ATM users are Fleet Bank customers. Fees will not be charged to Fleet customers for any Fleet transactions; other banks' fees are set by those banks for "network transactions."

MMC ATM users, regardless of their bank, will be able to use the new machine for withdrawals and transfers only. It will no longer be possible to make deposits to this machine.

Comments and questions about the new ATM should be directed to Janet Alexander, Assistant to the Executive Vice President and Treasurer, x2536.

## MOSCINSKI, FROM P. 1

Services at Mission Bay and Clairemont Hospitals in San Diego.

A graduate of Kansas State University, Moscinski earned her Masters of Social Work at San Diego State University.

Moscinski is a Diplomate in Clinical Social Work in the National Association of Social Workers. She is affiliated with the National Association of Social Workers and the Society of Hospital Social Work Directors, for which she is presently National Membership Chairperson and has served as President of the Southern California Chapter.

## Contributing to our community

As of November 19, over 1,500 Maine Medical Center employees had given \$85,021.57 to United Way. If that money were all one dollar bills stacked one on top of the other, they would stand more than 70 feet tall.

The grand total of funds collected thus far in Greater Portland for Greater Portland is approximately \$6 million—plus one bushel of potatoes! (We don't know either!)



THE CONTRIBUTIONS OF United Way solicitors, group leaders, volunteers, and planners were acknowledged at a coffee in November. Here are some of the volunteers who helped put together packets for MMC's United Way solicitors and group leaders: Milt Tibbetts, Jerry Kaufer, Sally Rendall, and Mark Sanborn. Many other volunteers helped but are missing from the photo: Melva Farnum, Marlene LaShay, H. Burton Rendall, Barbara Haight, Norma Pulkinen, Annette Osgood, Dorothea Preble, Christine Peterson, and Mary Welch. A/V Photo.

*Once is not enough!*



**MMC recycles.**



## HOMECOMING, FROM P. 1

Breggia, M.S., and Michael Szatkowski, B.S. The staff has more than forty years combined experience in Immunogenetics.

Maine is a good place to be living if you are waiting for a kidney. The waiting period is shorter here (an average of five months) as compared to the national average. All kidney transplants done in the state are performed at MMC, and all of the tissue-typing and crossmatching for the kidney transplantation program are done at the Immunogenetics lab.

The histocompatibility lab staff types the blood of a kidney donor and determines if the kidney will or will not be a good match for the recipient. In addition, the staff performs crossmatches to find antibodies to genetic markers of the donor. The lab's work is vital for patients awaiting transplantation, because compatibility of a donor's kidney and a potential recipient is the key factor in determining whether the recipient is able to accept and keep the donated kidney.

Presently, Dr. Leeber and Dr. Mahoney are working on methods that will improve detection of pre-existing antibodies in patients awaiting transplantation. Knowing which patients have antibodies present and which do not makes it easier to predict which patients will do well and which won't. Dr. Leeber and Dr. Mahoney are working on another related project together: immuno suppression. The researchers are looking into sensitive methods which will actually suppress antibody formation. In other research areas concentrating on improving transplant survival, tests such as cytometric crossmatches are being developed. These kinds of tests will benefit high-risk patients in need of a second or third transplant.

Referring to the transplant program and the blood research lab collaboration, Dr. Leeber says "We've come to work hand in glove with them." Tissue-typing is critical in predicting the outcome of organ transplants. The histocompatibility lab has always played an enormous role in the success of the kidney transplant program, and now it's coming home.



"THROW THE alarm clock away!" Mary Boyle was told recently by her former boss, Edith Harris, at her going away party. Boyle worked in Medical Records for 37 years. A/V Photo.

## Here's a great holiday idea

Maine Medical Center's Blood Donorship Recruitment Committee has made it easy for you to give a very important gift this holiday season. It's quick, easy, and (nearly) painless.

The gift is the gift of life: a donation of blood to the American Red Cross. You can give your gift December 19, between 11:30 AM and 4:30 PM, or December 20, between 7:00 AM and 1:00 PM, in the Dana Center. Sign up Monday, December 16, through Friday, December 18. On those days, sign-up tables will be at the Blood Bank from 7:00-9:00 AM and 3:00-5:00 PM and outside the Cafeteria from 11:00 AM to 1:00 PM. You can also make your appointment or get more information by calling Human Resources, x2106.

The Recruitment Committee is Edna McKenney, Patient Accounts; Sandy Cushman, Human Resources; Jackie Robinson, Psychiatry; George Alexander, Engineering; David Lovejoy, Data Management; Lawrence Gorton, Audio/Visual Resources; Isabel Higgins, Medical Rehabilitation; and William Gousse, Pharmacy. The Committee Coordinator is Joe Seger, Human Resources.



## Ask Away!

An MMC employee recently put the following question to the Employee Benefits Office:

*"Why is the tax sheltered annuity program only available for investing money in Mutual Funds from American Funds, a family of funds which charges a 6% load and sales charge, while most mutual funds charge 2 to 4%, plus management fees?"*

Here's the response from Benefits staff:

*"A tax-sheltered annuity (TSA) is a long-term savings plan designed specifically to supplement your retirement (i.e. the combination of Social Security and pension). With a TSA, a portion of your salary can be set aside; no Federal or State taxes are paid on the money or on the interest it earns until it is withdrawn.*

*"Maine Medical Center's TSA program has been designed to serve the different needs of MMC employees. There are currently three different plans that employees may choose to participate in:*

*"The American Funds Group, administered for MMC by A.G. Edwards & Sons, Inc.,*

*is a family of more than 20 mutual funds from which employees choose to invest pre-tax dollars. Employees may invest their full contribution in one fund or divide their contribution into several different funds. In answer to the question about "loads" (fees charged either up front or upon withdrawal) and sales charges, there are **no** loads or sales charges of any kind attached to individual accounts. This is because the amount of money invested by MMC employees is high enough to qualify for a discount. There is, however, an administration fee of \$10.00 annually.*

*"In addition, Kidder Peabody administers a plan through Kemper that offers several different account options varying from fixed and flexible rate accounts as well as an option involving stocks and bonds. UNUM administers its own TSA product designed specifically to meet the needs of hospital employees with a competitive guaranteed fixed annual rate."*

If you would like more information regarding Tax Sheltered Annuities, stop by the Benefits Office or call x2973.

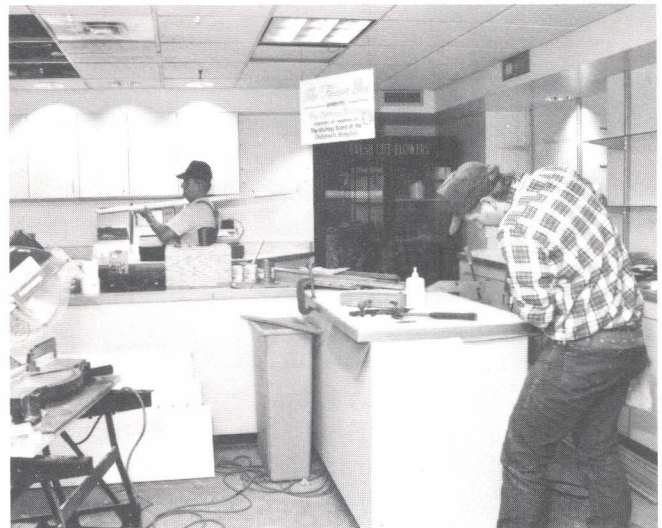
The Flower Box  
presents

### *A Festival of Trees*

Decorated Trees  
Boxwood Trees  
Christmas Centerpieces  
Plants

9:00 AM—4:30 PM  
Monday through Friday  
11:00 AM—3:00 PM  
Saturday

We deliver within the hospital.  
All proceeds to benefit Pediatrics at  
Maine Medical Center.



VISIT THE "new" Flower Box! Gregory Young, right, and Roger Boissonnault of Murray Construction recently updated the Flower Box, installing new shelving. A/V Photo.



## Winning carvers awarded for creativity

In this year's Pumpkin Carving Contest, the winners were: Jay Morin, R3, first place; Colleen Mowatt, Medical Records, second place; and Patty LaFavore, Food Services, third place.

The contest was sponsored by Food and Nutrition Services.

## Appreciation for sister's co-workers

I would like to thank all of the people on P3A who gave so generously to Lyric Theatre in memory of my sister, Margaret Herman. Because of the generosity of you and many others, Lyric will be able to purchase four new theatre seats. Theatre was very dear to Margaret's heart and she would have loved knowing that you all cared so much.

You were all so kind to Margaret. The wonderful party you gave her just before her surgery and the daily visits in Special Care meant so much to her; and I, on behalf of her family, thank you deeply and sincerely.

Nancy H. Smaha

*Margaret Herman was a unit secretary on P3A. She was an MMC employee for 26 years.*

## Story contest winners announced

Maine Medical Center Library staff announce the winners of 1991's National Children's Book Week Short Story Writing Contest: *The World is an Open Book*.

For **Best Use of Theme**, Michele Morin was honored for her story, "The World is an Open Book."

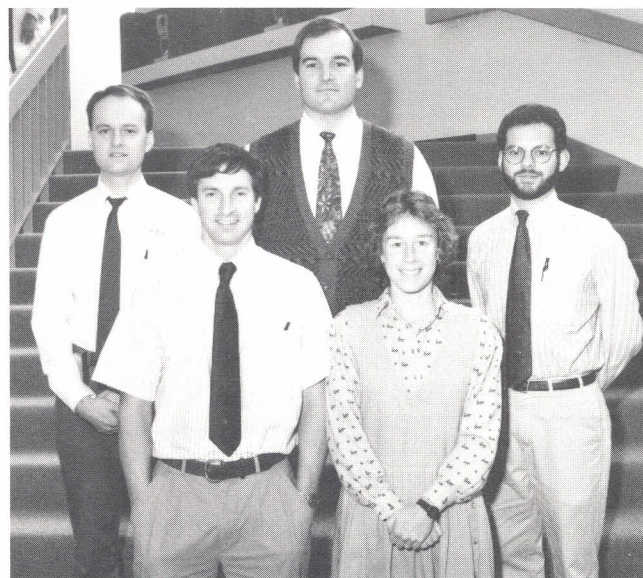
David Lewis' "An Open Book Story" garnered honors for **Best Use of Hospital Environment as Theme**.

The **Most Imaginative** story was "Gold Coins and Boots" by Yvonne Bogatses.

Honorable Mentions go to Nancy Baker, Stephanie DeLeon, Elise Dunphe, Christine Jacobs, Stephanie Lee Mitchell, and Mary Woodward.



**THE FAMILY FIELDERS** are 1991's first place softball team! They are, back row, from left: Bill "Slugger" Linders, M.D., Charlie Belisle, M.D., Peg Cyr, M.D., Coach Jim Haller, M.D., Roseann Gumina, M.D., Jonathan March, M.D., and Will Saltonstall, M.D.; front: Mary P. Guerrero, M.D., Dan Pierce, M.D., and Minda Gold, M.D. Missing team members: Joel Botler, M.D., Lou Golden, M.D., Sue Brume, Nursing, Amy Belisle, M.D., and Kevin Haley, M.D. A/V Photo.



**SECOND PLACE WINNERS** were With Ourselves. Back row, from left: James Lambert, M.D., Karl Hakmiller, M.D., and Coach Mark Richard, M.D.; front: Chip Cathcart, M.D., and Wendy Cathcart, M.D. Missing team members: Phil Lapp, M.D., Robert Cormier, RN, Skip Winters, UVM-3, Dave Picard, M.D., Mike Coyne, M.D., Steve Dobieski, M.D., and Dave Bucci, M.D. A/V Photo.



## MARKETPLACE

In order to ensure that everyone has an opportunity to use the "Marketplace," ads may be placed *once only*. Repeats will be allowed only on a space available basis.

### FOR SALE

MGI stationary treadmill, variable resistance, timer, distance, speed, exc. cond. \$300. Call 774-9223 evenings.

Craft Open House. Dec. 7-8, from 9AM-4PM. Spruce Swamp Rd., Buxton, off 202.

1983 Yamaha Bravo snowmobile. Looks great, runs well. Handwarmer grips. \$799. Call 284-2135.

3BR home, North Raymond, 25 min. to Portland. Paved circular drive, wraparound deck, landscaping. 1 1/2 acres. \$96,500. Call 657-5225.

1 y.o. king size waterbed, rails, mirrored headboard, sheets, pad, etc. Must sell, \$200 firm; antique side board w/5 drawers. Exc. cond., \$75 firm. Call 642-2269.

Buildable lot in South Hiram, 1 acre, \$6,000. Call 892-4188.

Baseball, football, hockey, and basketball cards. Sets, singles, or packs. Call 772-2925 10AM-1PM, or anytime Friday or Saturday.

Twin bed, mattress, box springs, side rails, carved head- and footboards, exc. cond., \$95; Motobecane 10-speed bike, \$25; 4' round deck or picnic table with hole for umbrella, stained white, \$25. Call 767-3108.

King size waterbed, 5 y.o., good cond. Pine bookcase headboard, heater, etc., all for \$100. Call 865-4202 evenings or x2971 days.

Cape Elizabeth, 4 BR raised ranch, 1 1/2 bath. \$119,000. Call 799-8289.

Portland/Westbrook line, cleared residential buildable lot with sewer and water. Near busline and shopping center. \$21,900 or BO. Call 854-5663.

BIC Sport ski rack, fits cars with rain gutters. \$30; men's long grey coat, size 40L, great cond. \$25. Call 773-8095.

Full size Serta box spring and mattress, good cond. \$75. Call 772-8227 after 3:30 PM.

2 tickets to Portland Symphony, "Magic of Christmas," Dec. 21. Good seats. Call 655-4101.

3 BR, den, W/W carpet, barn w/elec. fenced 1 1/2 acre pasture, 3 acres/ 30 min. to Portland. \$122,000. Call 926-3386.

1984 4-door sedan Volvo, cream color. Well-maintained. 86 K miles. Call 797-8245.

### FOR RENT

Year-round 2 BR cottage at Pine Point. Near Beach. \$400/mo. + utils. Call 883-9400.

Westgate area, 2 BR, new kitchen, parking, W/D hook-up. \$575/mo. + utils. Call 799-2164.

3 BR home, family room, fireplace, dishwasher, garage. \$850/mo. + utils. Lease req., extended stay preferred. Call 799-6310.

3 BR, 4th floor condo, LR, DR, den, pantry, W/D hook-up, storage area, porch. \$825/mo. + utils. Call 617-698-0980 collect after 7 PM or 781-2611.

### PLEASE NOTE



If you would like to submit an advertisement, notice, or other item for inclusion in an issue of *What's Happening*, you **must include** the name, department, and telephone extension of a contact person. Please make it easier for editorial staff to verify and clarify information submitted for publication!

New small efficiency, private bath, micro., refrig. \$80/wk. includes all. Call 871-9605.

2 BR 1 1/2 bath condo, full cellar, W/D hook-up. Call 774-6962.

3 BR house, 2 car garage, oil heat. \$550/mo. Call 774-6962.

Westbrook, 1 BR apt. renovated, private, parking, on bus line. 5 min. to town. No dogs. \$425/mo. incl. all utils. Call 856-0138.

Sunny, quality, 2 BR apartment. W/W carpeting, hardwood floors, view, garage, attic, parking. \$585/mo. Call 799-0054.

Sunny 1 BR apt. First floor. Hardwood floors, parking for 2 cars, LR, DR, W/D. \$525/mo. incl. heat and hot water. Avail. Jan. 1. Call 773-2191.

1 BR, 1 1/2 bath, furnished, dishwasher, W/D, parking for 2 cars. No pets. Building is on water and has indoor pool and whirlpool. Avail. Jan.-May. \$600/mo. + utils. and sec. dep. Call 800-221-5431 x2280, or 603-225-7458.

### ROOMMATE WANTED

Share Victorian house w/2 F. Jan.-April. \$250/mo. + 1/3 utils. Call 879-6007.

### WANTED

Good home for free tiger kitten. Call 892-6218.

Homes to wallpaper. Professional paperhanger. Refs., free estimates, insured, all work guaranteed. Call 874-6688.

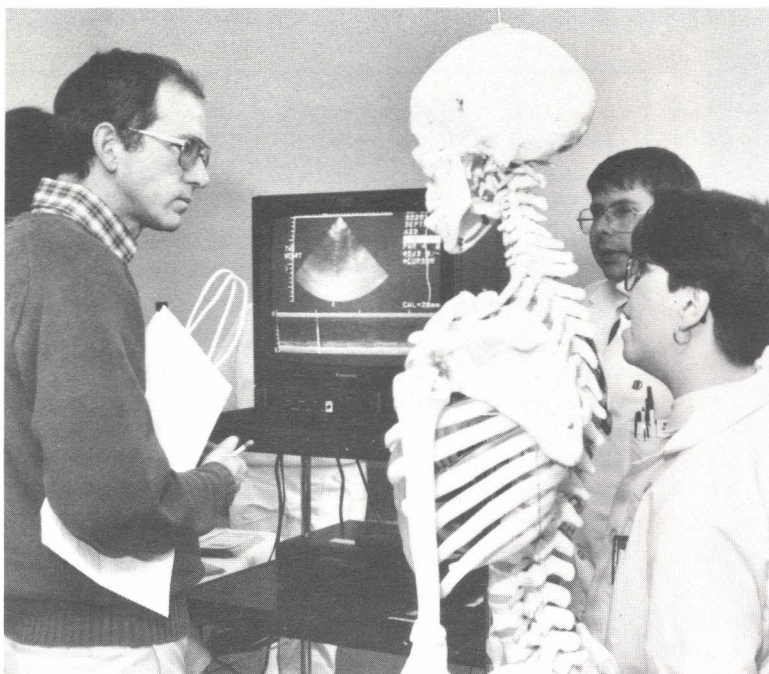
Full-size metal bed frame in good condition. Call x4407.

Painting, wallpapering jobs. Ref. avail., free estimates, multi-room discount. Call 767-5752 or 799-0231.

### Make the deadline!

The deadlines for announcement-length items and **MARKETPLACE** ads in *What's Happening* are Dec. 4 for the Dec. 18 issue and Dec. 18 for the Jan. 2 issue. All items must be in writing.





AMONG THE many displays at this year's Career Day was this one presenting information about the Radiology Department. Here an attendee learns a little about the field—from the people, not the skeleton! Other presenters were Nursing Services, Pulmonary, Cardiology, Surgical Technology, Nutrition Services, Volunteer Services, Medical Rehabilitation, Emergency Medical Technology, Laboratory Medicine, and Medical Record Services. A/V Photo.

## About People

- **Therese Qualey, RN**, has been named Assistant Head Nurse in Pediatrics. Qualey has been a staff nurse in this area since 1978 and brings her expertise in infant and child care to her new role.
- **Rita Wiley, RCVT**, and **Jackie Young, RCVT**, Cardiac Catheterization Laboratory, have passed the CCI/NBCVT registry exam for Cardiovascular Technology with a specialty in Invasive Cardiology.
- **Wayne Clark**, Director, Public Information, received a MacEachern Award from the Health Academy of the Public Relations Society of America. The first place award in Feature Writing was presented at the PRSA Annual Meeting in Phoenix.

# What's Happening

Maine Medical Center, 22 Bramhall Street, Portland, ME 04102-3175

*What's Happening* is published every other Wednesday at Maine Medical Center for members of the hospital community and for friends of the institution throughout Maine and northern New England. Comments, questions, and suggestions may be addressed to the Office of Public Information, MMC, 22 Bramhall Street, Portland, Maine 04102-3175. (207) 871-2196. Editor: Wayne L. Clark.

## New Employees

**NURSING:** Kathleen Ambler, Deborah Duggan, Jacqueline Fiorentino, Sonje Mitchell, Monica Perry, Susan Prescott, Sharon Roberts, Bonnie Smith, Christine Smith, Michele Thacker, Lynne Thompson, Brenda Walker  
**OPERATING ROOM:** Robert Kahler  
**PULMONARY MEDICINE:** Russell Kimball, Paul Martell, Louise Zitoli  
**CARDIOLOGY:** Barry O'Neil  
**OCCUPATIONAL THERAPY:** Leslie Sigman  
**HUMAN RESOURCES:** Doris Atwater  
**MEDICAL RECORD SERVICES:** Linda Broderick  
**ENDOCRINOLOGY:** Theresa Foster  
**PATHOLOGY:** Victoria Kinney  
**ACCOUNTING:** Cecelia Koenig  
**MMCRI:** Barbara Lee  
**ADMITTING:** Patricia Niles  
**PATIENT ACCOUNTS:** Alice Pride  
**REHABILITATION MEDICINE:** Jill Kadis Williams  
**PHARMACY:** Donald Wood

## Safety Snippet

Don't leave candles  
burning unattended.  
Check safety instructions  
on children's toys.

NON-PROFIT ORG.  
U.S. POSTAGE  
PAID  
Portland, Maine  
PERMIT NO. 35