

what's happening

Maine Medical Center
Portland, Maine 04102

February 6, 1985

Vol. 16, No. 28



THERE WAS NO MISSING the enthusiasm of the people who showed their fellow employees through the new Bean Building January 24, 25, and 26. They displayed a distinct pride of ownership, as they unveiled, explained, and answered questions about their new quarters. At left, Special Care Unit Head Nurse Pat Jordan, RN, leaves one group to meet another for a tour through SCU. For more photos of the tours, and glimpses of the new spaces, see inside. . .

Patients' families benefit from fund

The Rotary House Fund report for the fourth quarter of 1984 indicates the Fund continues to be a valuable resource for families of patients at Maine Medical Center. The Rotary Club of Portland project provides emergency housing assistance for families of out-of-town patients, allowing them to be close during time of illness.

The October - December report shows the fund was used to assist families of 13 patients from ten Maine counties. Total assistance of \$820.95 provided housing at local hotels for parents, grandparents, siblings, spouses, and an aunt. Patients included several newborns, a woman with a high-risk pregnancy, a cardiac catheterization patient, and pediatric cardiac, trauma, and burn patients.

The fund is administered by the MMC
ROTARY, page 2

We do it.

We all do it, 365 days a year. Whatever our job at Maine Medical Center, we do it all for the hospital's patients—over twenty-thousand of them every year. Modern health care is a team effort, and there's no sense being shy about it: we're the best team there is, and we all make possible MMC's reputation for quality and caring.

During Employee Appreciation Week each year, Maine Medical Center makes a special effort to recognize the work we do all year long. It's a fitting time for each of us to reinforce our own pride in the work we do as members of a very important team.



Employee Appreciation Week



Continuing Education

Nursing Staff Development

- *Managing Difficult Situations: Lifting, Bending, Pushing, Pulling* A Program for Nursing Assistants
Tuesday, February 12
7:30 - 9 AM
and
Thursday, February 14
1:30 - 3 PM
R1 Classroom
(prior registration only)
- *Maintaining Perspective in Caring for the Cancer Patient: The Professional's Viewpoint* Panel presentation by nurses and physicians
Wednesday, February 13
4 - 5 PM
Classroom 3, Dana Center
1 CERP approved

Local oncology group receives its charter

The Southern Maine Chapter of the Oncology Nursing Society (SMONS) has been accepted as a chartered chapter of the national organization. The local group of registered nurses has been meeting regularly since December of 1983, and currently has eighteen members from Androscoggin, Cumberland, and York counties. The group expects to double its membership within the next year. Other goals include the development of an outreach educational newsletter and the establishment of a long range oncology nursing educational calendar for Southern Maine.

The group meets monthly at Maine Medical Center to provide opportunities for networking and to present continuing education programs. A joint program with the Southern Maine Chapter of the American Association of Critical Care Nurses (AACN) is planned for April. All registered nurses are welcome to attend the monthly educational programs. A fee of \$1.00 is charged to non-members.

The annual fee for membership in the national ONS is \$36.00, and includes a subscription to the organization's official publication *Oncology Nursing Forum*. The local chapter requires an additional \$5.00 annually to cover operating costs. For further information, please contact Karen Kane, RN, MMC Oncology Nurse Specialist, at 871-2847 or Marie Turcotte, RN, MMC Staff Development Instructor, at 871-2397.

R4, Rehab are having fun with old times

"You must have been a beautiful baby," or at least a recognizable one. A recent contest on R4 that called for matching baby photos with names of ten male employees produced a four-way tie. Jeanne Lemire, RN, Nursing; Pat Plummer, Occupational Therapy; Joy Cloutier, Physical Therapy student; and Miriam Walker, Physical Therapy Assistant, tied up in the Department of Rehabilitation contest. Jeanne Lemire emerged victorious after two tie-breakers.

Contest instigator Stephen Hull, M.D., provided a first place prize of a quart of Ben & Jerry's Ice Cream, and a consolation prize (for the fewest correct matches) of a Brownie Surprise from B&J's.

The baby photos of twelve of the female employees in Rehabilitation, including nurses, will be mounted in the R4 display case soon. The contest will begin again in earnest and all are invited to join in the competition.

Gram Negative Sepsis is meeting subject

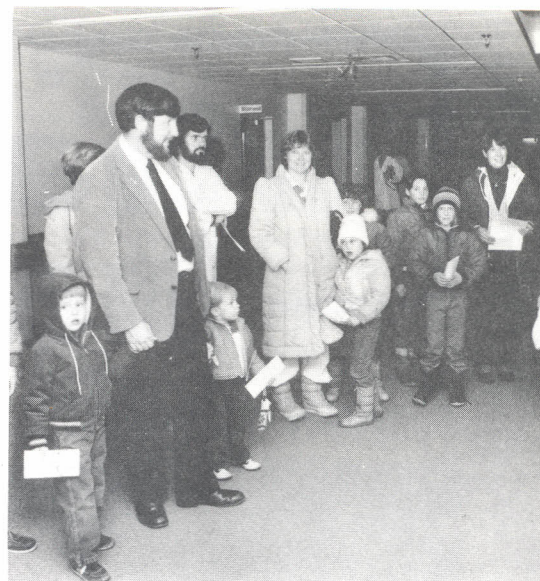
Gram Negative Sepsis is the topic for the February 13 meeting of the Southern Maine Chapter of the American Association of Critical Care Nurses. Frank Altman, M.D., is the speaker.

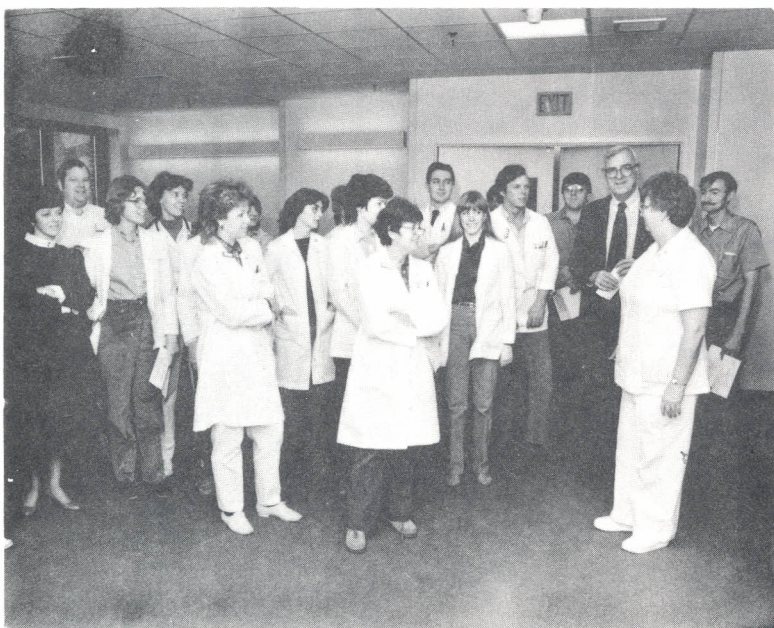
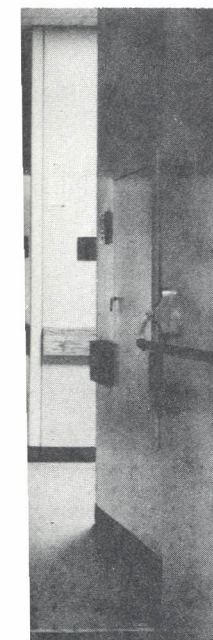
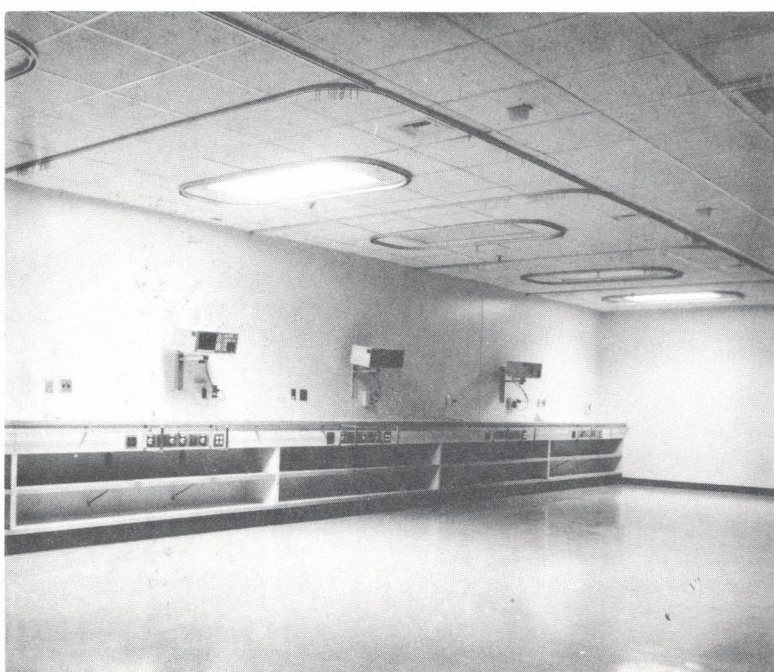
The meeting will be in the Charles A. Dana Health Education Center at Maine Medical Center. Registration is at 6:30 PM; the program is at 7 PM. Guests are welcome to attend; there is a guest fee of \$3.00. There will be a Chapter meeting following the program at 8 PM.

ROTARY, from page one

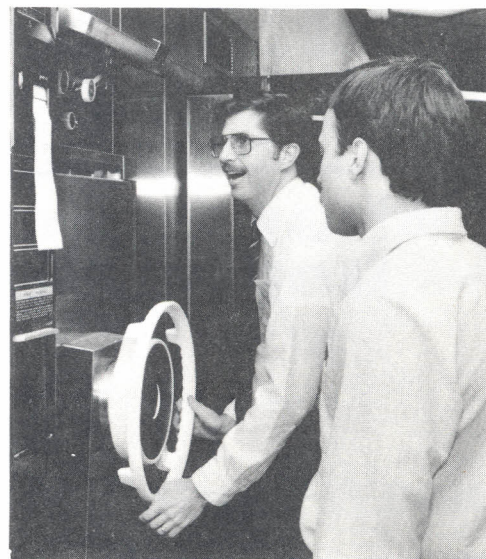
Social Services Department, based on referrals from Admitting, Emergency, and Nursing. MMC pays for the lodging, and is reimbursed by the fund. Eligibility is determined by a variety of factors, as is the level of assistance in a par-

The Rotary Club of Portland created the fund in 1982 as a means of assisting MMC patients' families with housing, without creating a dedicated facility. It proved so worthwhile that the service organization expanded the fund to cover families of patients at Osteopathic Hospital of Maine and Mercy Hospital as well, and maintains a \$10,000 annual commitment to the Fund.





THE SPECIAL PREVIEW TOURS for members of the MMC family brought employees, volunteers, spouses, children, and others—more than 750 people and three Cabbage Patch kids in all. Volunteer tour leaders like Paul Labbe (at right, in top left photo) led groups of fifteen through the Bean Building. The groups were met along the way by representatives from the various departments, like Special Care Unit Head Nurse Pat Jordan, RN. Center left, she proudly shows off SCU Section I, which along with two other ten-bed sections is nearing completion for a March move-in. One result of the years of planning for the new building is the location of departments in good positions relative to others. At bottom left, for instance, is a view from the basement level lobby of the new elevator tower, looking down the corridor at operating room #12. That OR is specially designed for trauma surgery, and the Emergency Department—the first stop for trauma patients—is just down the corridor to the right of where the photographer is standing. Top right, OR Nursing Director Cathy Cohen shows a group through the OR suites. A recurring theme of the presentations in each department was the amount of input the department's employees had in the design process. The individual lighting in the Recovery Room (center right) is one example. The nursing staff felt it important to be able to control the light in the individual "stations," especially for patients who would be spending the night in Recovery. Curtains (not yet up) will provide privacy. Ambulatory Surgery's new lobby (below right) is ample and pleasant, and convenient to the outside: the canopy-covered drive-up entrance is just outside the windows at left. Below, a manufacturer's representative and a technician check a sterilizer in the new Central Services Division. CSD is located one floor below the operating rooms, and connected by elevator and dumb-waiter. (A/V Photos)



Marketplace

FOR RENT: Two apts., \$350 each. Lease option, partner, or manager. Cozy, near MMC/USM. Call 772-2204 after 6 PM.

FOR RENT: Cozy room near MMC/USM. \$199/mo. plus utilities. Call 772-2204 after 6 PM.

FOR RENT: Near USM, spacious, quiet and clean 2 BR, LR, DR, den. Carpeted, stove, refrig. and dishwasher, washer/dryer hookup, offstreet parking. No pets. \$495/mo., plus utils. Call 829-5320 after 5 PM.

FOR RENT: Unfurnished, Westbrook area, 2 BR. In two-family house. Carpeted, 2 parking spaces. Nice backyard. \$475/mo. including heat and HW. Sec. dep. Avail. mid-March. Call 856-6096.

FOR RENT: Oakhurst area, Cape Elizabeth. 3 BR gambrel with fireplace in LR. Private lot, pond in back yard, beach association. Avail. Feb. 1 with option to buy. Mature adults, no pets. \$800/mo. plus utils. Call 774-0852, leave message.

FOR RENT: 2 BR apt. with w/w carpeting, bath, KT, LR, stove/refrig. Adults only, no pets. Near MMC, Mercy, busline. \$350 sec. dep., references required. \$65/week unheated. Call 775-2581.

FOR RENT: Westbrook College area, large 2 BR, LR, DR, eat-in kitchen, carpeted, new furnace, off-street parking. No pets. \$445/mo. plus utilities. Call 829-5320 after 5 PM.

FOR RENT: Eastern Promenade, luxury 2 BR apt. All modern appliances, hot water, w/w carpeting. On bus route. Low utility bills. \$500/mo. 1-year lease. Call 772-2139.

FOR RENT: Room available in private home in nice residential neighborhood. Laundry and kitchen privileges \$175/mo. or share home \$175/mo. plus portion of utilities. 15 minutes to hospital. Call 883-6000 evenings or weekends.

ROOMMATE WANTED: Professional non-smoking female roommate wanted for Olde English Village 2 BR apartment. \$160/mo. rent, \$106 sec. dep. Avail. immediately. Call 772-5074 after 5 PM.

ROOMMATE WANTED: Male roommate to share 2 BR, four-room apt. BRs recently renovated. 192 York St., easy walk to MMC. \$125/mo. plus 1/2 heat, 1/2 electric (winter total about \$215/mo., summer \$145-150/mo.). Call Scott T. Hanson at 871-0396 after 5 PM.

FOR SALE: By owner, Brighton Avenue cape. 3 BR, master w/bath. K, DR, den, parlor w/frpl., family room, laundry room, workshop. W/w carpeting throughout, on bus lines, near shopping centers and schools. Very low 60s. Call 774-1042 for appointment.

FOR SALE: Cape Elizabeth condo. for sale by owner. New, never occupied, in Hobstone development. One floor, attached garage, 2 BR, LR with frpl., fully-applianced kitchen w/dining area, private patio, corner, woodsy setting. \$117,500. Call 767-2015 evenings.

FOR SALE: 1972 240Z Datsun. California car, no rust. Excellent condition. \$3,000. Call 854-5603.

FOR SALE: 1980 Ford Mustang, 4 cyl. standard. 38,000 miles. \$3,350. Call 799-3150 after 5 PM.

FOR SALE: Sofa bed, green, gold, and beige color. Very good shape. Asking \$150. Call 854-2303.

FOR SALE: Floor model stereo, 8-track tape. AM/FM, headphone, two extra speakers, 12 tapes. \$200 firm. Call Leo at 839-6694.

FOR SALE: Buying and selling 90% U.S. silver coins. Call Bob at 799-6047, 8 AM - 1 PM, Monday-Friday. Will pick up or deliver.

FOR SALE: Sears-o-pedic full-size sleep set with frame. Exc. cond. Call 829-5035 after 6 PM.

what's happening

WHAT'S HAPPENING is published every Wednesday at Maine Medical Center, Portland, Maine for members of the Hospital community and for friends of the institution throughout Maine and northern New England. Comments, questions and suggestions may be addressed to Public Information Office, MMC, Portland, ME 04102. Telephone: (207) 871-2196.

Barbara Burns, Editor.

Contributors to this issue:

Wayne L. Clark, Public Information

Lidia Dill, Public Information

Larry Gorton, A/V Resources

Charlotte Hurd, A/V Resources

Judy MacKenzie, A/V Resources

Leigh Whittemore, A/V Resources

Mark Eversole, Print Shop

Henry J. Guiod, Jr., Print Shop

FOR SALE: Mattel Intellivision master component with 2 games, \$40. Like brand new. Also, solid oak desk with six locking drawers including a file drawer. Refinished beautifully. \$350 or best offer. Also Barrecafter roof-mount locking ski rack. Adjustable for most cars. Excellent condition, \$40. Call 883-5286 or 761-2541 evenings.

WANTED: Used metronome. Call x2984.

RIDE NEEDED: From Casco (Route 121), Monday - Friday, 7:30 - 4:00 shift. Call Steve at x2818 days, 627-4999 eves.

BABYSITTER WANTED: Suitable for senior citizen or student. Fort Williams area of Cape Elizabeth. Call 799-5084 eves.

BABYSITTER NEEDED: For occasional weekend evenings, South Windham area. Call Babette at 775-3101, 9 AM - 5 PM, Monday - Friday.

New building tours: one last chance!

Employees, volunteers, physicians and their families will have one final chance to take a preview tour of the new L. L. Bean building: Thursday, February 7, between 3 and 4 PM. This is a special arrangement—in answer to popular demand—with time carved out of an already packed construction schedule. There will not be another chance for a tour, because move-in dates for the new building are coming very close. In fact, the new CSD will not be on the tour February 7, because it will be in operation. As before, tours will start in the ground floor main corridor.

what's happening

Maine Medical Center
Portland, Maine 04102

NON-PROFIT ORG.
U. S. POSTAGE
PAID
Portland, Maine
PERMIT NO. 35