

what's happening

Maine Medical Center
Portland, Maine 04102

Vol. 13, No. 45

June 9, 1982

Board of Corporators meets this afternoon

Maine Medical Center's Board of Corporators meets in semi-annual session this afternoon in Classrooms 3 & 4, beginning at 2:30 PM. After a business meeting, the Corporators will hear a presentation by Director of Pediatric Surgery Albert W. Dibbins, M.D. "Pediatric Surgery -- the State of the Art" will feature an actual case history, one that was particularly challenging and involved many of MMC's departments.

Co-presenting the slide and discussion program with Dr. Dibbins will be Harry W. Bennert, M.D., of MMC's Department of Obstetrics and Gynecology; Susan Porth, RN, Assistant Head Nurse of the Intermediate Intensive Care Unit; and Ann McPhee, RN, of the Special Care Unit.

The Board of Corporators is the corporate body that serves as the cornerstone of MMC's structure as a non-profit corporation. Its primary legal role is the election from its membership of a Board of Trustees, which is the ultimate governing authority for the hospital. Here, though, unlike many hospitals, corporators have the opportunity to become much more deeply involved in hospital activities.

Corporators, representing a cross-section of the hospital's service area, serve as fundraisers and in many cases contribute themselves. They serve on various special committees, including those dealing with fundraising, planning, and program review.

Perhaps most importantly, the corporators are the "eyes and ears" of the hospital in the community. They are effective spokespeople for the hospital, and bring to the hospital the interests of the community they represent. This two-way relationship is important for both the hospital and the community, and the main reason for the semi-annual meetings of the Corporators is to allow this exchange to take place.



SCU IV OPENING: For a picture preview, turn to page three.

BLOOD

The Red Cross will be looking for yours June 11, 7:30 AM - 4:30 PM, in Classrooms 3 & 4. Please give the Gift of Life, which is needed year-round but even more in the summer.

All it takes is a little time, and all you'll feel is good.

Flag Day ceremony at Bramhall entrance

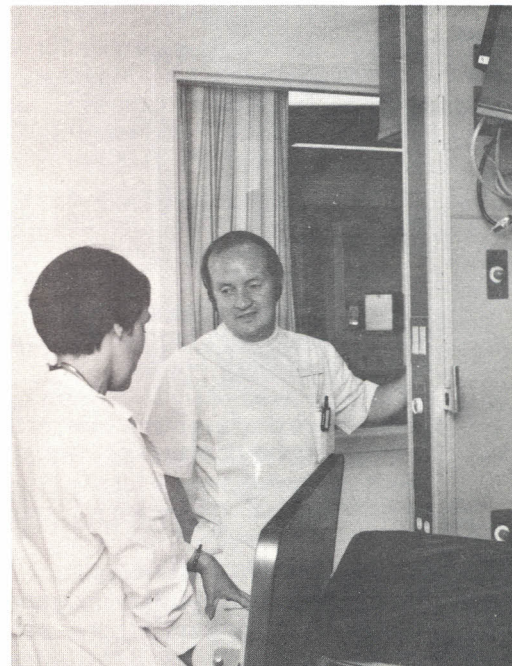
Flag Day -- June 14 -- will be observed in proper style at Maine Medical Center, with a 9:00 AM flag-raising ceremony at the flagpole in front of the Bramhall entrance. The flag being raised was donated by Cathaleen Hodgkins, NA, in memory of her late husband Charles, who worked in the Paint Shop.

MMC Director of Pastoral Services John Simpson, D. Min., will begin the ceremony with an invocation. Ed Meehan, Paint Shop, and MMC President Edward C. Andrews, Jr., M.D., will address the gathering. All employees, visitors, and others are invited to attend.

SCU IV, MAINE MEDICAL CENTER'S NEW EIGHT-BED INTENSIVE CARE UNIT on R-9, phases into operation this week. Last week, more than 200 hospital employees from all departments attended an Open House on the new unit, and all came away more than a little impressed. In design and layout and with the latest in monitoring and support equipment, the unit presents a potential for extending MMC's capability for assuring high quality patient care, and affording maximum in staffing efficiency.

The unit is designated SCU IV because MMC's existing 20-bed Special Care Unit on R-6 comprises three sections of five, seven, and eight beds each. The hospital applied for and last July received Certificate of Need approval to construct SCU IV, based on the heavy demands on the Special Care Unit and its staff. SCU I, II, and III, dedicated when the Richards Wing was constructed in 1968, had been operating at a steady increase in occupancy from 80% in the mid-1970's into a 90% range by 1980-81. The CON application filed in March of 1981 documented an average occupancy rate of 87% and an increasing number of days at which the unit operated at capacity. Other pressing factors included the increasing severity of illness levels in SCU patients, the increase in coronary artery surgery, an increasing use of the Recovery Room as a "holding area" for SCU, and the need to maintain some open SCU beds for emergencies.

Seen at the SCU IV preview here (clockwise from upper left): Paul Cox, Jr., M.D., Chief of Critical Care Medicine, and Pat Jordan, RN, CCRN, Head Nurse for Special Care, do the ribbon-cutting honors. Sunny Howe, RN, CCRN, Assistant Head Nurse for Special Care, and Pat Jordan demonstrate break-away doors which assure ease of patient transfer and movement of equipment. Visitors read types of information contained in monitoring units at each bedside. Checking outlets for support equipment at each bedside are, from left, Marge Montejo, CRTT, George Blaisdell, CRTT, and Joe Webber, Respiratory Technician. Demonstrating monitor access at the nursing station is Patrice Hoak, RN, CCRN, Assistant Head Nurse for Special Care. (A/V Photos)



New Employees

EMERGENCY: Beth R. Papalia

FOOD SERVICES: Cynthia McClure, Kimberly Strout, Nancy Sullivan

HOUSEKEEPING: Gayle Bemis, David Grindel, Beth Keezer

CENTRAL SERVICE: Ann E. Flaherty

EMERGENCY: Richard Chandler, M.D.

FOOD SERVICE: Paul Dobbie, Ian MacLeod

HOUSEKEEPING: Thomas M. Perkins

MICROBIOLOGY: Lisa Benson

NURSING: Denise M. Albert, Diane M. Allen, Catherine M. Coyle, Rebecca Cunningham, Marjorie Davis, Gail Edgerly, Susan Farrell, Kimberly Harris, Kim Harvey, Mary E. Largay, Dana M. Law, Lisa C. Lozier, Darlene Mantis, Deborah Martin, Laurie Megathlin, Patricia Monaghan, Sharon Morse, Sallie Ordway, Elizabeth Parker, Pamela Porter, Theresa Redmond, Susan Roney, Glen Roy, Elizabeth Severino, Karen Zambri

PHARMACY: Vicki Downs

OPD/OBS: Virginia Burton

OPERATING ROOM: Alison J. Andrews

RADIOLOGY: Katherine Gibbons

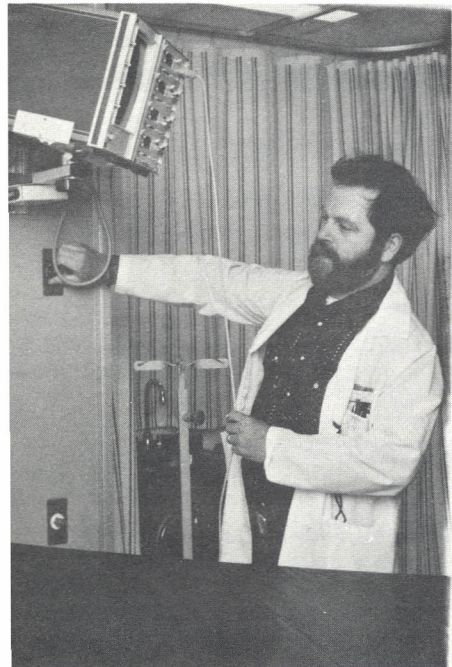
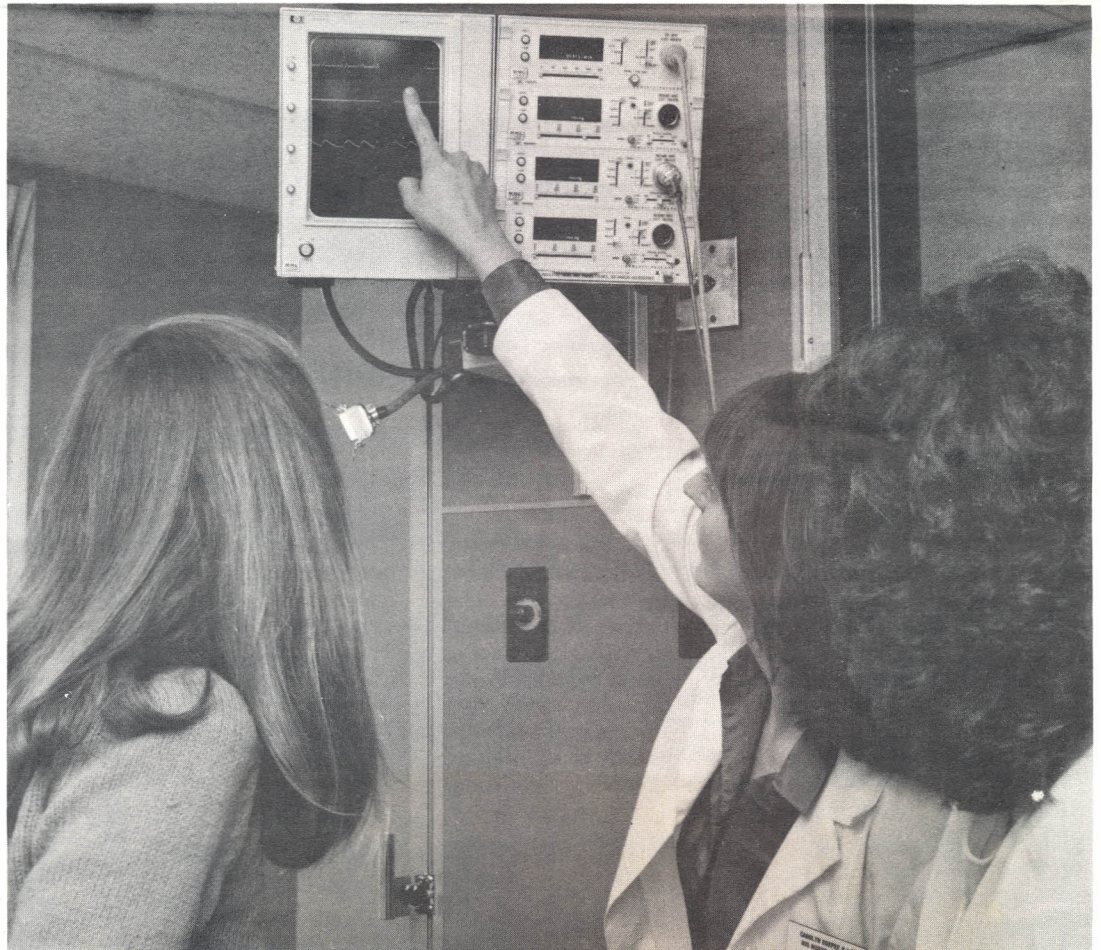
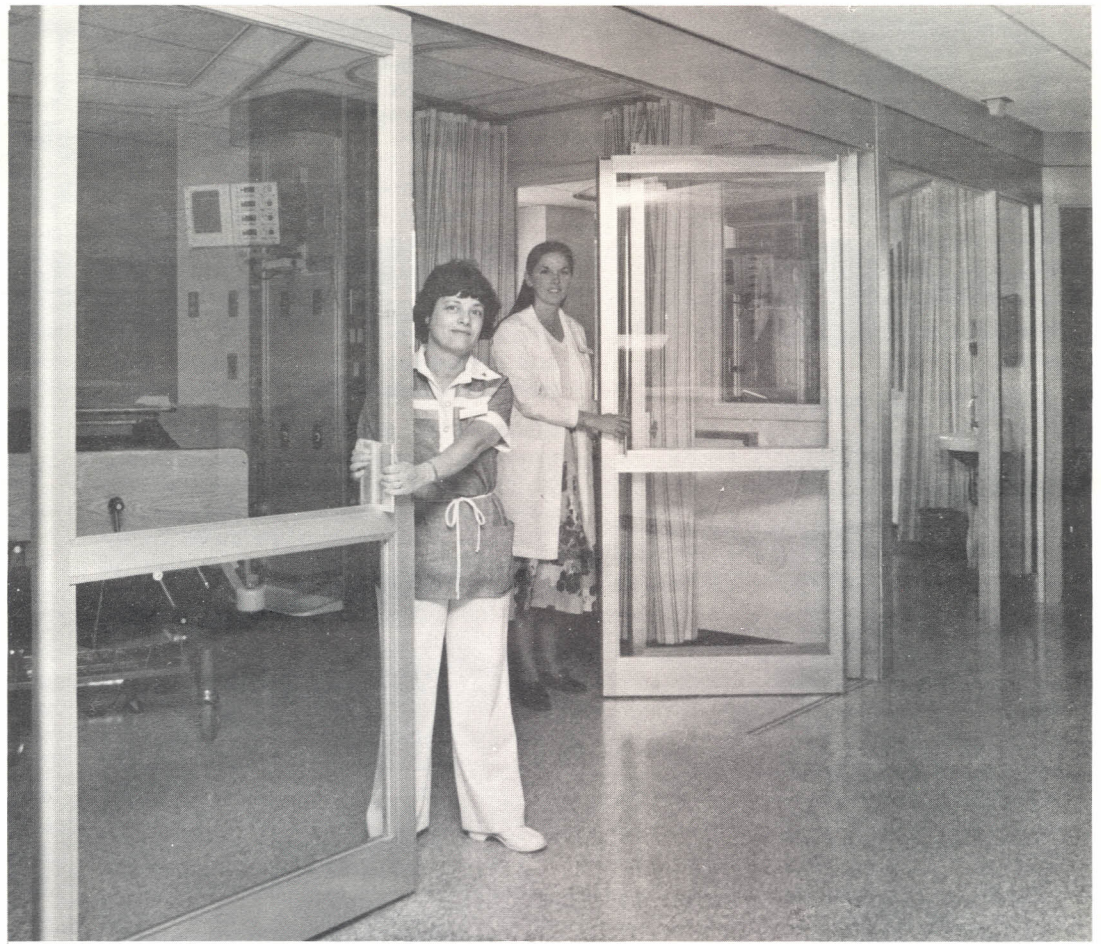
Study shows many ways we manage to get hurt

The Consumer Product Safety Commission has used statistics gathered from 73 hospitals in 1981 to estimate injuries nationwide from various activities and objects each year. The data was gathered from emergency room records, and excludes injuries from automobile accidents.

The most injuries occur on steps, ramps, and landings, and next on the list is the bicycle. Baseball, football, and basketball come next. Less glamorous is the next category: nails, carpet tacks, screws, and thumbtacks.

A combination of exuberance and the numbers of people engaging in the activity account for dancing's prominence on the list. It is Number 72, with an estimated 26,000 fast-stepping their way to the emergency room each year.

Just for the record, an estimated 10,000 injuries annually are attributed to rugby, 8,000 to snowmobiling, and 5,000 to cheerleading. Also, 12,000 injuries were caused on or near bar stools.



EAC News

The Red Sox buses are running! A trip is planned to the June 12 game against Cleveland, and also for the August 28 game against California. The price is \$18 per game, including the bus ride and tickets. They are available from Art Stevenson, Unit Manager, and Beverly Cookson, Cafeteria.

Marketplace

FOR RENT: Rent new apt. and also board your horse in Hollis Center. 1 BR, KT, large LR and storage area, bath w/shower, garage. \$300/mo. Heat and lights included. Working horse board arrangement if desired. Call 727-3846. Also, carpooling to MMC avail. Hours are 8:30 AM to 4:30 PM approx.

FOR RENT: 4 RM plus small utility room. 1st floor of 2-family house. \$290/mo. unheated. Payson Park area, has big yard. Parking for 2 cars avail. No dogs. Call 774-2575.

FOR SALE: 1976 MGB. Good cond. Offers over \$3,000. Call 799-4255 after 6 PM.

FOR SALE: One pair almost new E78-14 Cooper Trendsetter bias belted white-wall summer tires. Mounted on spin balanced Chrysler rims. \$50. Call 781-2902 after 5 PM.

FOR SALE: Man's 10-speed Schwinn Varsity bicycle. Ex. cond. \$100. Call 883-2550 after 5 PM.

FOR SALE: 1979 Cutlass Supreme. PS/PB. Ex. cond., new tires, rear window defroster, 50,000 miles. \$4,900. Call 773-4658.

FOR SALE: Pentax binoculars. 16 x 50. Ex. cond. \$100. Call 773-8239 after 6 PM.

FOR SALE: 1980 Peugeot moped. A steal at \$300. Call 284-6851.

FOR SALE: 1979 Mercury Capri. Auto., 6-cylinder, PS/PB, sunroof, AC, AM/FM stereo, 24,000 original miles. Call 773-4189 after 5 PM.

FOR SALE: 1979 VW bus. Bright yellow with white top. 4-speed standard trans., AM/FM radio, rustproofed. Engine recently tuned and running very well. \$3,200. Call 767-4185.

FOR SALE: Birch hardwood butcher-block living room set. Couch, 2 chairs and coffee table. Solid, durable, and well-constructed. \$400. Call 767-4185.

ROOMMATE WANTED: Professional woman nonsmoker seeks same to share lovely 2 BR Cape in West Falmouth 8 miles from Portland. \$275/mo. plus oil and elec. Avail. mid- to late June. 2-car garage, fireplaces, 2½ baths and 2 acres of land including small garden. Prefer person who needs quiet place to live. Call Phyllis Havens at 1-244-3101 or write to P.O. Box 167, Mt. Desert Island, ME 04660.

FOR RENT: 3rd floor in large Western Prom house. 2 BR, large LR-DR, limited kitchen, bathroom. Furnished. \$250/mo. includes all utils. Call 774-6468, days or 772-3088, eves.

FOR RENT: 2 BR apt. sub-lease from Sept. 1 to March 31, 1983. Longer terms avail. Opposite Merry Manor Restaurant in South Portland. \$395/mo., sec. dep. required. Call 774-0438.

ROOMMATE WANTED: Person to share my 2-Br apt., or together look for new apt. for Aug. 1. Call 774-6891 after 5 PM.

WANTED: Teenager to babysit 3½-year-old for 2 weeks, days. Last week in July and 1st week in August. West End area. Also needed for occasional evenings. Call 772-3999 after 5 PM.

New Employees

PHARMACY: Lorraine L. Spaulding
PULMONARY MEDICINE: Fredrick Lewis

what's happening

WHAT'S HAPPENING is published every Wednesday at Maine Medical Center, Portland, Maine for members of the Hospital community and for friends of the institution throughout Maine and northern New England. Comments, questions and suggestions may be addressed to Public Information Office, MMC, Portland, ME 04102. Barbara Burns, Editor.

Contributors to this issue:
Wayne L. Clark, Public Information
Cary Johnson, Public Information
Mary Corey, A/V Resources
Larry Gorton, A/V Resources
Charlotte Hurd, A/V Resources
Judy MacKenzie, A/V Resources
Leigh Whittemore, A/V Resources
George A. Drew, Print Shop
Henry J. Guiod, Jr., Print Shop
Jim Stewart, Print Shop

Murphology

ABEL'S CONSERVATIVE PRINCIPLE

Never do anything for the first time.

CAPONE'S LAW

You can get much farther with a kind word and a gun than you can with a kind word alone.

JIM BRADY'S LAW

Eat, drink, and be merry, and tomorrow you'll be a fat, grinning drunkard.

KOMMEN'S LAW

If you look like your passport photo, you're too ill to travel.

LAW OF PREDICTABLE RESULTS

No matter what happens, there is someone who knew it would.

NASH'S LAW

Progress might have been all right once, but it went on too long.

RICKOVER'S LAW

If the Russians would send a man to Hell, we'd say, "We can't let them beat us to it."

MRS. ROOSEVELT'S LAW

No one can make you feel inferior without your consent.

RUNYON'S RULE

The race is not always to the swift, nor the battle to the strong -- but that's the way to bet.

what's
happening

Maine Medical Center
Portland, Maine 04102

NON-PROFIT ORG.
U. S. POSTAGE
PAID
Portland, Maine
PERMIT NO. 35

MRS. ESTHER L. COUNTS
174 MARGARET ST.
SO. PORTLAND, ME

04106