

WHAT'S

mmmc

PUBLIC RELATIONS DEPARTMENT
MAINE MEDICAL CENTER
PORTLAND, MAINE 04102

HAPPENING

VOL. 8, No. 5

Sept. 1, 1976

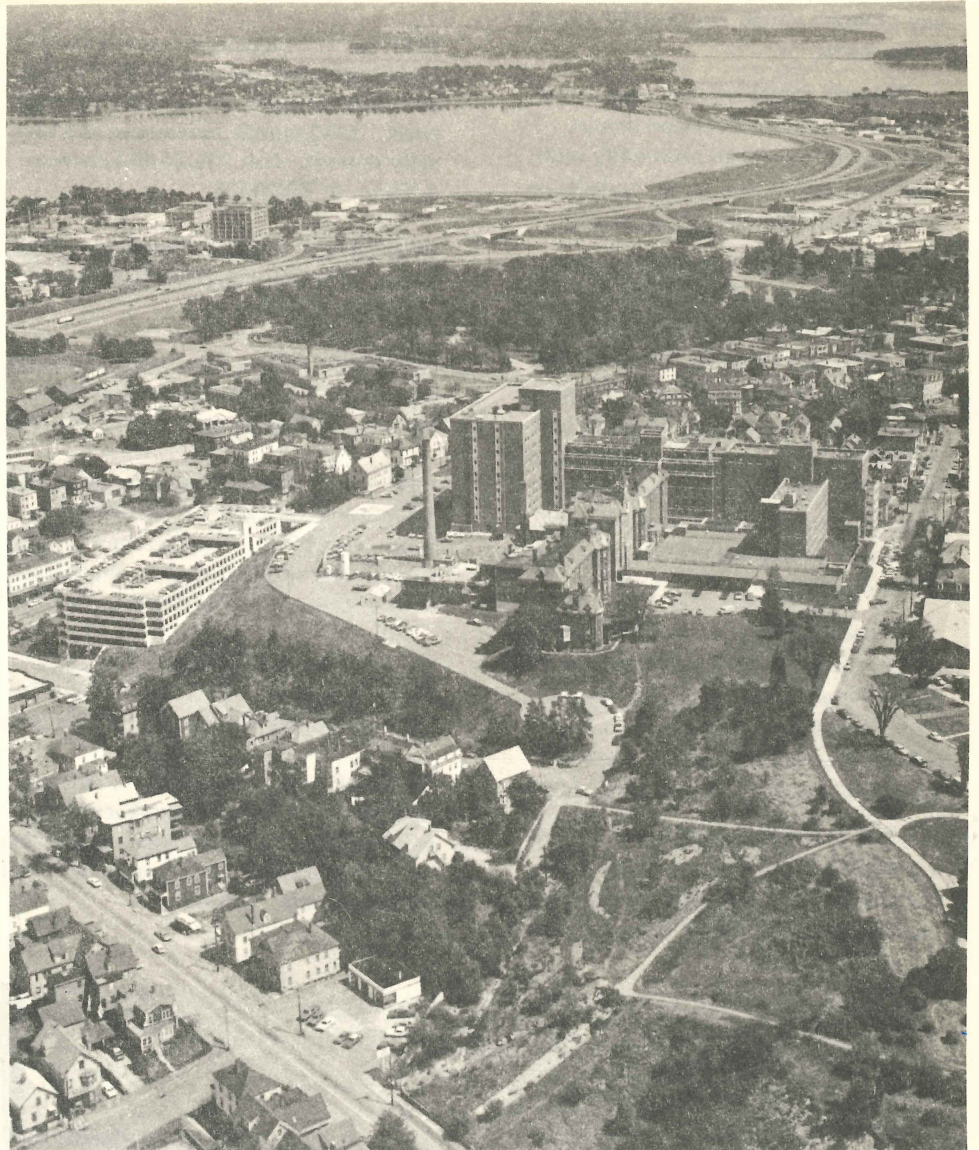
MMC 'RARE BIRDS' DONATE BLOOD IN RED CROSS DRAWING

That concentration of DONATOR SANGUIS ESTIVALIS in the NDF classrooms Tuesday weren't birds after all, but people, more than 100 of them, who each gave a pint of blood. The total -- of which about 90 percent returns to MMC for patient use -- will help relieve a shortage that is expected to develop over the Labor Day weekend holiday.

The drive, put together by Marge Harris and her MMC Blood Donor Recruitment Committee, with the help of the FRIENDS of MMC, was declared a huge success, and Albert Ricci, Portland-area Red Cross Blood program director, was quick to express his organization's appreciation.

He also thanked MMC for putting a little fun into the usually stern business of recruiting blood donors. He said the bird-watching promotion and its good-humored use of the rare bird theme will be borrowed by the Red Cross in New England over the weekend.

Not the least among the attractions in the NDF Tuesday were the refreshments prepared by members of the FRIENDS. Their contributions included ten banana breads, at least a dozen dozen deviled eggs, and several gallons of punch. Friends were of great help, too, in manning the blood donor appointment table in the Admitting Lobby from last Wednesday through Monday, day before the drawing.



NEWEST AERIAL PORTRAIT -- The MMC complex is seen from the west in this newest aerial photo, made just after the sun returned following a long seige of rainy, cloudy weather. Shown are the parking ramp, the buildings of the hospital itself, I-295,, and the Back Cove. (A/V Dept. Photo)

FRUSTRATIONS, EXCITING PROGRESS FILL SPEECH PATHOLOGIST'S DAY

Hard work, careful guidance, frustrations and exciting progress all go to make up a typical day for Patsy Derr, MMC Speech Pathologist.

Working with the hospital's communication-impaired patients, her caseload may represent a wide variety of speech, voice and language problems, ranging from the young child who has failed to develop speech to the adult who has lost his ability to understand speech or express his needs following a stroke or head injury. She also works with patients who have difficulty in swallowing or speaking because of weakness in oral muscles, with those who stutter or with those who must learn a new way of speaking

after a laryngectomy.

"It's frustrating work at times," comments Patsy, "but when you do see your patient progressing, it makes all the effort worthwhile."

MMC's speech pathologist functions as a member of the Rehabilitation team and many of her patient referrals come from Richards 4. However, physicians throughout the hospital are using her

see SPEECH THERAPIST, next pg.



Patsy Derr

SPEECH THERAPIST, from pg. 1

services; and she is also consulted by Occupational Therapy on children in their perceptual and early intervention programs.

Upon receiving a referral, Patsy reviews the patient's chart, confers with his physician and paramedical personnel, talks with family members and then begins a thorough evaluation of the patient. By gaining as much information about the patient as possible, both about his problem and about the kind of person he is, it is possible to set up a therapy program which is especially suited to his needs.

Therapy commences as soon as the patient's physical condition allows. Patsy spends up to an hour daily with each inpatient, either at the bedside or in the speech therapy office on R4.

Twice weekly all members of the Rehab team -- Dr. John J. Lorentz, representatives from the occupational, physical and speech therapy units, the vocational counselor, a dietitian and nurses from the unit -- sit down together and discuss each Rehab patient's treatment plan and progress. The patient benefits from this continuing exchange of information among the professionals who are caring for him.

When the patient is well enough to return home, therapy may continue on an outpatient basis. Between hospital visits, the patient is expected to help himself by completing daily work assignments keyed to his individual needs.

MMC's speech pathologist feels that the patient who has a communication disorder is often quite handicapped in our verbal society, not only socially, but

in vocational and educational pursuits as well. She says these people all deserve the chance to improve their skills in therapy, although there are some who are highly motivated but make only very limited progress. "This is a very discouraging experience for both patient and therapist," she says.

But for Patsy, the rewards from seeing a patient gain more confidence in himself and in his ability to communicate far outweigh the frustrations.

MARKETPLACE

FOR RENT: Near MMC, newly renovated apartment, second floor, 7 rooms and bath. Heated, stove, refrig, and disposal. \$250 month, references and security deposit. Call 774-7549 between 4-7 p.m. or 892-9574.

FOR SALE: King 2-B Trombone, used 1 mo., with stand and cup mute. Call 799-5464 after 6.

WANTED: Will sit for children between 6 p.m. and 7:30 a.m. Lives near MMC. Call Sherry Regner after 5 p.m. 773-7435.

FOR SALE: Waterfront cottage on New Meadows River, 100' on shore. Mint cond, sleeps 7/8. Fireplace, gas & wood stoves. Hot water & shower, bunkhouse & woodshed. Call 865-4839 or 729-8403.

FOR SALE: Admiral frost-free, 2 dr. white. 2 yrs. old. Excel. cond. \$145. Call 929-5638 between 10 a.m. and 2 p.m.

WANTED: Reliable person to babysit small child & do light housekeeping 2-3 days weekly. Western Prom. area, on bus line. Own transportation preferred. References, please. 773-0553.

FOR SALE: 1970 Ford Torino Wagon, asking \$275. Call the Credit Union, 2449.

RIDE needed to and from Pine Street, So. Portland. Call Nancy at 2465.

FOR SALE: 1974 Chevy half-ton pickup, 350 engine, power steering, auto transmission. Call 799-7259 after 5 p.m.

DEFENSIVE DRIVER COURSE PLANNED

The MMC Safety Committee will sponsor the National Safety Council's Defensive Driving course at MMC beginning Sept. 9. Classes will be held from 5 to 7 P.M. in the R8 Classroom.

The course is free, and is designed to cut the chances of your involvement in a serious highway accident in half.

Under a new point system for Maine drivers which became effective last May, motorists can erase three penalty points from their traffic records each year by successfully completing the eight-hour four-week course.

Drivers with clean records can bank three points by attending the course.

Since even a good driver is made better by the experience of the course, the Committee hopes enough MMC people will sign up to make the presentation possible. Family members and friends are welcome. Jim Fraser at 2441 is taking names.

CANCER PROJECT

The MMC Research department needs normal, healthy females, age 20 or over, to serve as a control group for cancer research project. If you'd like to help, contact Dr. Kievit, Research, 2627, and make an appointment to have a small blood sample drawn.

ABOUT PEOPLE

JADINE R. O'BRIEN, executive director, Center for Community Dental Health, has been named to a two-year term with the Maine Commission for Women, formerly the Governor's Advisory Council on the Status of Women.

MARY ZSIGA, assistant housekeeper, received a cake, gifts, and a purse of money at a party in her honor given by fellow employees. Mrs. Zsiga retired Aug. 20 after seven years with MMC's housekeeping department.

ELEANOR C. CAIRNS, chief librarian in MMC's Health Science Library, has been asked to serve on Maine Library Association's standing committee on Continuing Education.



BUSY DAY AT EMD -- Ambulances and Police cruisers crowd the parking area behind the Richards Wing on a recent afternoon when the stresses of several accidents and suddenly ill Greater Portlanders involved the personnel and facilities of the MMC Emergency Division. There have been more serious episodes at the EMD, but few involving as many public vehicles. (A/V Dept. Photo)