

8-21-2017

Interprofessional Rounds

Sarah Thompson
Maine Medical Center

Haley Pelletier
Maine Medical Center

Barbara Bush Children's Hospital-Inpatient, Maine Medical Center

Suneela Nayak
Maine Medical Center

Ruth Hanselman
Maine Medical Center

See next page for additional authors

Follow this and additional works at: <http://knowledgeconnection.mainehealth.org/mmc>

 Part of the [Interpersonal and Small Group Communication Commons](#), [Interprofessional Education Commons](#), and the [Pediatric Nursing Commons](#)

Recommended Citation

Thompson, Sarah; Pelletier, Haley; Barbara Bush Children's Hospital-Inpatient, Maine Medical Center; Nayak, Suneela; Hanselman, Ruth; and Tyzik, Stephen, "Interprofessional Rounds" (2017). *Maine Medical Center*. 2.
<http://knowledgeconnection.mainehealth.org/mmc/2>

This Article is brought to you for free and open access by the All MaineHealth at MaineHealth Knowledge Connection. It has been accepted for inclusion in Maine Medical Center by an authorized administrator of MaineHealth Knowledge Connection. For more information, please contact mckeld1@mmc.org.

Authors

Sarah Thompson; Haley Pelletier; Barbara Bush Children's Hospital-Inpatient, Maine Medical Center;
Suneela Nayak; Ruth Hanselman; and Stephen Tyzik

Project: Barbara Bush Inpatient - Interprofessional Rounds
Last Updated: 8/21/2017

Executive Sponsor: Mark Parker
Facilitator: Haley Pelletier



Team Members: Sarah Thompson, BBI Staff, Suneela Nayak, Stephen Tyzik, Ruth Hanselman

Problem/Impact Statement:

Previous to this KPI, Nursing was not included in daily rounding with the physician teams, which led to sub-optimal interdisciplinary communication. This kind of communication is considered “best-practice” at similar hospitals, which has been shown to improve patient and family satisfaction, as well as a reduction in length of stay and readmission rates.

Scope:

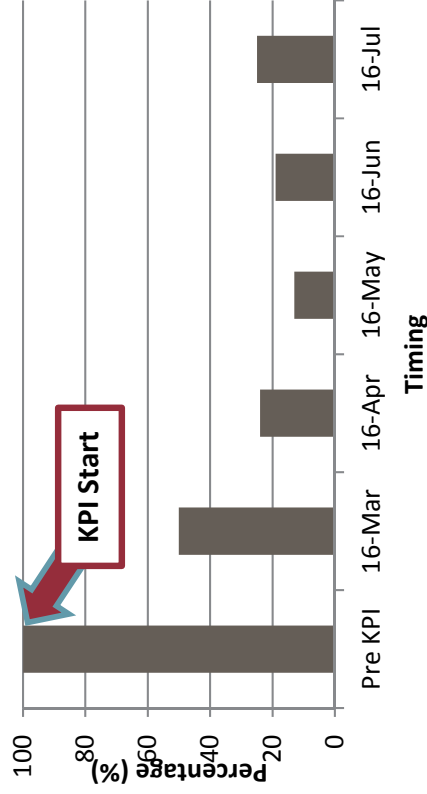
In scope: All Nursing and Resident Physician staff working within BBI at Maine Medical center
 Out of scope: Other units utilizing Operational Excellence and KPI implementation at Maine medical center

Goal/Objective:

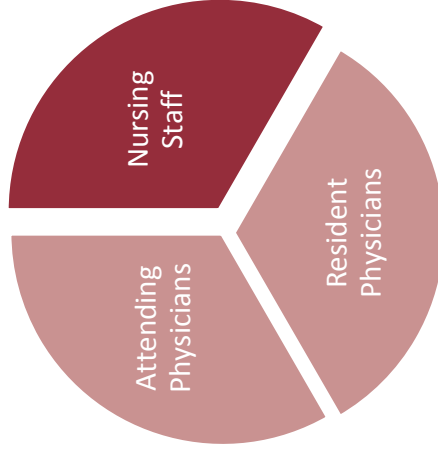
100% of the time RNs will be called to AM rounds on Mon/ Tues/ Wed/ Fri and updated on the plan of care Thur./Sat./Sun. for all patients covered by the pediatric residents.

Baseline Metrics/Current State:

% of RNs not called to medical staff rounds



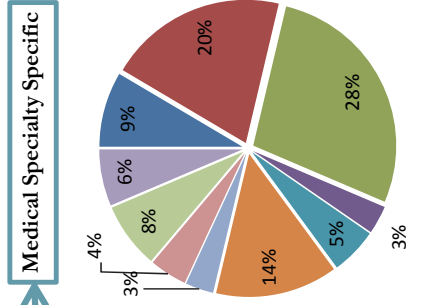
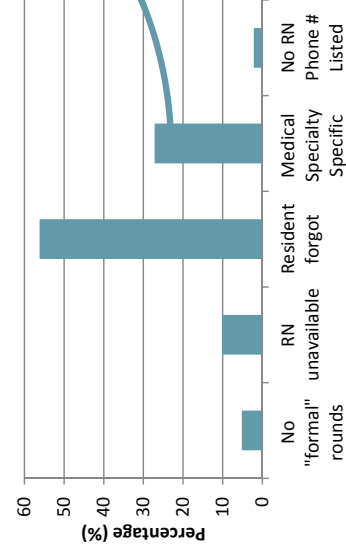
Baseline of Care-Team Communication



Current State: Nurses (RNs) are not called to provider rounds, as this is not currently an expectation.

Root Cause Analysis:

% of Total: Reasons why RN was not called to medical staff rounds



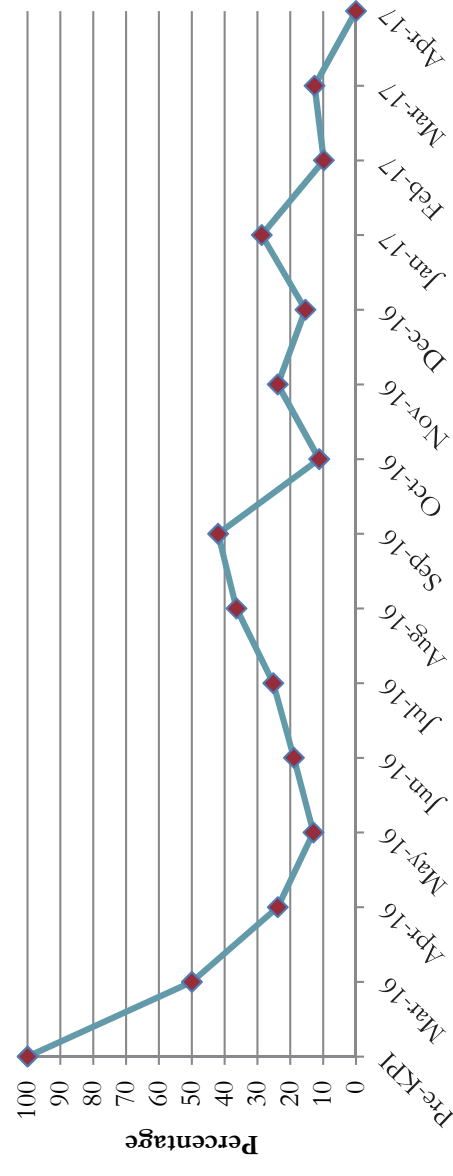
Countermeasures

Action	Owner	Due Date	Status
Data collection done by residents (self-reporting)	BBI OpEx Committee	8/18/2016	Completed
Evaluate for culture change	BBI OpEx Committee	10/19/2016	Completed
Reached out to chief resident	BBI OpEx Committee	11/7/2016	Completed
Ensure all members of the team fully understand the process and pro-actively remind all residents covering the month of December	BBI OpEx Committee	11/30/2016	Completed
Identify a KPI Sponsor	BBI OpEx Committee	2/2/2017	Completed
Start monthly resident “welcome letter” with important unit reminders from nursing leadership	BBI OpEx Committee	2/6/2017	Completed
Rounding audit to gather detail on areas for improvement	BBI OpEx Committee	3/15/2017	Completed
Institute random audits by BBI OpEx Committee member, in order to ensure the behavior is hard wired. If there appears to be a relapse in behavior, the KPI will be reinstated.	BBI OpEx Committee	N/A	Ongoing

Outcomes

After undertaking this KPI goal, and utilizing operational excellence...

% of RNs Not Called to Medical Staff Rounds



95% of the time, RNs are called to AM rounds with the medical staff team.

Next Steps

- Continue with random audit of RN attendance to AM rounds to confirm this behavior is hard wired
- With Resident transition, provide expectations for interdisciplinary rounding
- Nursing leadership and Attending Physicians must work together to further re-enforce this “best practice” measure until it is a consistent part of the care environment

Plan

Do

Study

Act